

WELCOME TO IDAHO

YOUR COMPLIMENTARY RELOCATION
GUIDE TO THE BEAUTIFUL TREASURE VALLEY

2025

POWERHOUSE REAL ESTATE GROUP

LOCAL EXPERTISE. EXCEPTIONAL SERVICE.

info@powerhousereg.com | powerhousereg.com

Boise Office

621 S 17th St.

Boise, ID 83702

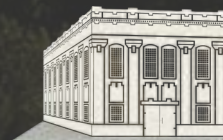
208-920-5966

Caldwell Office

805 Cleveland Blvd.

Caldwell, ID 83605

208-459-2200



POWERHOUSE
REAL ESTATE GROUP



POWERHOUSE REAL ESTATE GROUP

The Powerhouse Real Estate Group strives to build lasting relationships through trust, transparency, and exceptional results, ensuring every client feels confident and informed throughout their real estate journey. By continually enhancing our knowledge and adapting to market trends, we aim to exceed expectations, delivering outcomes that secure the future of our clients and the communities we serve.

Rooted in Boise, Idaho, and with an additional office in Caldwell, the Powerhouse Group brings unmatched access to the entire region. From the vibrant city life of Boise to the serene resort areas of McCall, Sun Valley, and Stanley, our agents are equipped to guide you through any real estate journey whether you’re exploring residential, luxury, multi-family, or investment properties.

Our team combines the insights of longtime locals with the fresh perspectives of newer residents who understand the excitement and challenges of relocating to Idaho. This blend of expertise allows us to cater to a wide range of clients, from first-time homebuyers to seasoned investors and developers, ensuring you find an agent uniquely suited to your needs and ready to provide knowledgeable, personalized support.

EMAIL
info@powerhousereg.com

WEBSITE
powerhousereg.com

BOISE OFFICE & PHONE
621 S 17th St.
Boise, ID 83702
208-920-5966

CALDWELL OFFICE & PHONE
805 Cleveland Blvd.
Caldwell, ID 83605
208-459-2200



TABLE OF
CONTENTS

| | | | |
|-------------------------------|----|-------------------------|----|
| MAP OF THE VALLEY | 4 | THE GREAT OUTDOORS | 44 |
| 12 REASONS TO LOVE THE VALLEY | 6 | WHITEWATER RAFTING | 50 |
| IDAHO FUN FACTS | 8 | HOT SPRINGS | 51 |
| OUR FOUR SEASONS | 9 | HIKING TRAILS | 52 |
| BEST EMPLOYERS | 10 | PARKS | 55 |
| BOISE | 12 | MOUNTAIN GETAWAYS | 58 |
| BOISE HOT SPOTS | 18 | SKI RESORTS | 60 |
| GARDEN CITY | 24 | GOLF COURSES | 62 |
| MERIDIAN | 26 | EVENTS BY THE SEASON | 64 |
| EAGLE | 28 | LOCAL FAVORITES | 73 |
| KUNA | 30 | HEALTHCARE | 86 |
| NAMPA | 32 | NEIGHBORHOODS | 88 |
| CALDWELL | 34 | LANDMARKS | 92 |
| MIDDLETON | 36 | LIBRARIES | 94 |
| STAR | 38 | PUBLIC SCHOOLS | 96 |
| EMMETT | 40 | HOME SCHOOL | 97 |
| MOUNTAIN HOME | 42 | PRIVATE SCHOOLS | 98 |
| TWIN FALLS | 43 | COLLEGES & UNIVERSITIES | 99 |

MAP OF THE TREASURE VALLEY

ADA COUNTY

A. BOISE

Population: 235,421

B. GARDEN CITY

Population: 12,784

Distance to Boise: 2 miles

C. MERIDIAN

Population: 134,801

Distance to Boise: 12 miles

D. EAGLE

Population: 32,319

Distance to Boise: 10 miles

E. STAR

Population: 16,333

Distance to Boise: 18 miles

F. KUNA

Population: 28,050

Distance to Boise: 19 miles

CANYON COUNTY

G. NAMPA

Population: 114,268

Distance to Boise: 20 miles

H. CALDWELL

Population: 68,336

Distance to Boise: 28 miles

I. MIDDLETON

Population: 11,016

Distance to Boise: 33 miles

GEM COUNTY

J. EMMETT

Population: 8,492

Distance to Boise: 31 miles



12 REASONS TO LOVE THE TREASURE VALLEY

1 CLEANLINESS

Our streets are clean! Unlike a lot of cities in America, our community prides itself on exceptionally tidy streets. This collective effort to preserve cleanliness contributes to the city's overall aesthetic and livability, making Boise an attractive place for both residents and visitors.

2 SAFETY

It's incredibly safe. Year after year the Boise area continues to receive top rankings for our country's safest cities. The overall sense of security felt by residents and visitors is a testament to our low crime rate and community culture.

3 TRAFFIC

Traffic is considerably less than most metropolitan areas. Which gives you more time to enjoy our beautiful community. Depending on where you live and work, you can easily get to where you need quickly, not hours of bumper to bumper to traffic.

4 FREEDOM

Idaho is celebrated for its expansive sense of freedom, characterized by its wide-open spaces and a lifestyle that values personal independence and self-reliance. The state's less restrictive approach to regulations and its embrace of outdoor and recreational activities contribute to a strong sense of liberty and freedom.

5 PROXIMITY TO NATURE

Boise is uniquely positioned amidst breathtaking natural landscapes, with mountains and forests encircling the city, offering quick access to the great outdoors. The city's proximity to these natural wonders means that residents can easily immerse themselves in a variety of outdoor activities within a 30-minute drive.

6 ACTION

Despite not having a large population or major sports teams, there's a vibrant buzz of activity. With an array of concerts, minor league and collegiate sports events to our thriving restaurant and bar communities, there is always something to do.

7 FAMILY FUN

Our area is a paradise for family fun, offering a plethora of activities that cater to all ages, from interactive museums and parks to outdoor adventures. The city's family-friendly atmosphere is enriched by its array of festivals, zoos, and recreational areas, making it perfect for creating cherished memories.

8 THRIVING JOB MARKET

With a growing tech industry and a diverse range of other employment opportunities, Boise presents a robust job market. Companies are increasingly choosing the Treasure Valley as a location, creating more jobs. Idaho is a very business friendly state, enticing start ups with less restrictive regulations.

9 ARTS & CULTURE

Enjoy a vibrant community filled with art galleries, theaters, and live music venues that showcase both local and international talent. There's hundreds of arts and crafts courses to choose from that are perfect for all ages.

10 PHILANTHROPY

The Treasure Valley has a long history of giving in our valley. From business moguls to everyday people, Idahoans continue to practice benevolence in their business and personal practices. And it's very easy to get involved!

11 FOUR INCREDIBLE SEASONS

Each season brings excitement with a unique amount of activities and reasons to be outside. From the lush, flower-filled springs and vibrant, sunny summers to the colorful autumns and picturesque winters, the Treasure Valley provides a year-round showcase of nature's diversity & entertainment.

12 BOISE AIRPORT

It's one of the simplest and easiest airports to navigate. Which makes weekend getaways or visiting family and friends out of state a breeze. You can get through security quickly and safely and also have several dining options & shops.

FUN FACTS ABOUT IDAHO

The Boise area is called The Treasure Valley because of its historical and agricultural significance, as well as the richness of opportunities it offers. The name dates back to the 1950s when local business leaders sought to promote the region's economic potential and vibrant communities. Here are some reasons why the name "Treasure Valley" is fitting:

AGRICULTURAL ABUNDANCE:

The valley has long been a hub for farming and agriculture, thanks to its fertile soil and irrigation from the Boise River. Crops like potatoes, onions, and sugar beets thrive here, making it a "treasure" for the local economy and food production.

ECONOMIC OPPORTUNITIES:

Beyond agriculture, the Treasure Valley has developed into a diverse economic center with industries ranging from technology and education to healthcare and outdoor recreation. Its prosperity and growth are often seen as a treasure to residents and businesses.

NATURAL BEAUTY:

The valley is surrounded by stunning landscapes, including the Boise River, nearby mountains, and vast outdoor recreational areas. These natural treasures attract visitors and provide a high quality of life for locals.

COMMUNITY AND CULTURE:

The name reflects the region's strong sense of community, cultural heritage, and vibrant neighborhoods, which are highly valued by residents.

Overall, the name emphasizes the richness and variety of what the area has to offer, making it a fitting designation for this thriving region.

NATION'S TOP POTATO PRODUCER:

Idaho is the largest producer of potatoes in the United States, accounting for nearly one-third of the nation's supply.

PRONUNCIATION IS KEY:

Most visitors commonly pronounce Boise as BOY-ZEE. Yet the quickest way to blend in with the locals is to pronounce the city's name as BOY-SEE. A favorite local tradition is cheering on the Boise State Broncos, where the entire stadium comes alive, chanting "BOY-SEE" in unison. It's a vibrant display of the community spirit that makes Boise such a special place.

OUR FOUR SEASONS

 **SPRING**
MARCH
High 54°F | Low 33°F

APRIL
High 62°F | Low 39°F

MAY
High 72°F | Low 47°F

 **FALL**
SEPTEMBER
High 81°F | Low 54°F

OCTOBER
High 65°F | Low 43°F

NOVEMBER
High 49°F | Low 33°F

 **SUMMER**
JUNE
High 83°F | Low 56°F

JULY
High 93°F | Low 64°F

AUGUST
High 92°F | Low 63°F

 **WINTER**
DECEMBER
High 39°F | Low 25°F

JANUARY
High 39°F | Low 25°F

FEBRUARY
High 45°F | Low 28°F

Boise, Idaho, is known for its sunny climate. On average, Boise enjoys about **206 sunny days per year**. Boise's climate, with its clear skies and a significant number of sunny days, is one of the factors that makes the city appealing to many of its residents and visitors.

Boise, Idaho, and the surrounding Treasure Valley area have a semi-arid continental climate. This climate is characterized by four distinct seasons: warm to hot summers, cold winters, and relatively mild spring and fall seasons. Summer temperatures often reach into the high 80s and 90s Fahrenheit (around 30-35 degrees Celsius), while winter temperatures can drop below freezing, with occasional snowfall.

One of the key features of Boise's climate is the low humidity, which makes the temperature extremes more tolerable. In the summer, the dry heat is less oppressive than in more humid climates, and in the winter, the cold is often a dry cold, which many find more comfortable than the damp cold found in more humid areas.

Precipitation in Boise and the Treasure Valley is relatively low, with most rain falling in the spring and intermittent snow in the winter. The area does not typically experience excessive rainfall or snowfall, contributing to the overall sunny and dry climate. This weather pattern supports a range of outdoor activities throughout the year, from skiing and snowboarding in the winter to hiking, biking, and water sports in the summer.



OUR BEST EMPLOYERS

TOP 15 EMPLOYERS

- #1: St. Luke’s Health Systems
- #2: Micron Technology, Inc.
- #3: Saint Alphonsus Health System
- #4: Albertsons
- #5: J.R. Simplot Company
- #6: HP Inc
- #7: Idaho Power
- #8: Winco
- #9: Wells Fargo
- #10: Blue Cross of Idaho
- #11: The YMCA
- #12: Jacksons Food Stores
- #13: Citi
- #14: Plexus Corp
- #15: Scentsy

BEST PLACES TO WORK MACRO EMPLOYERS (250+ EMPLOYEES)

- #1: Intuit
- #2: Idaho Central Credit Union
- #3: TitleOne
- #4: Franklin Building Supply
- #5: Farm Bureau Insurance

LARGE EMPLOYERS (100-249 EMPLOYEES)

- #1: CBH Homes
- #2: Ada County Clerk’s Office
- #3: TOK Commercial
- #4: Goode Motor Auto Group
- #5: Wright Physical Therapy

MEDIUM EMPLOYERS (50-99 EMPLOYEES)

- #1: The Nichols Accounting Group
- #2: Hayden Homes
- #3: Better Business Bureau
- #4: Colliers Idaho
- #5: Giltner Logistics, Inc.

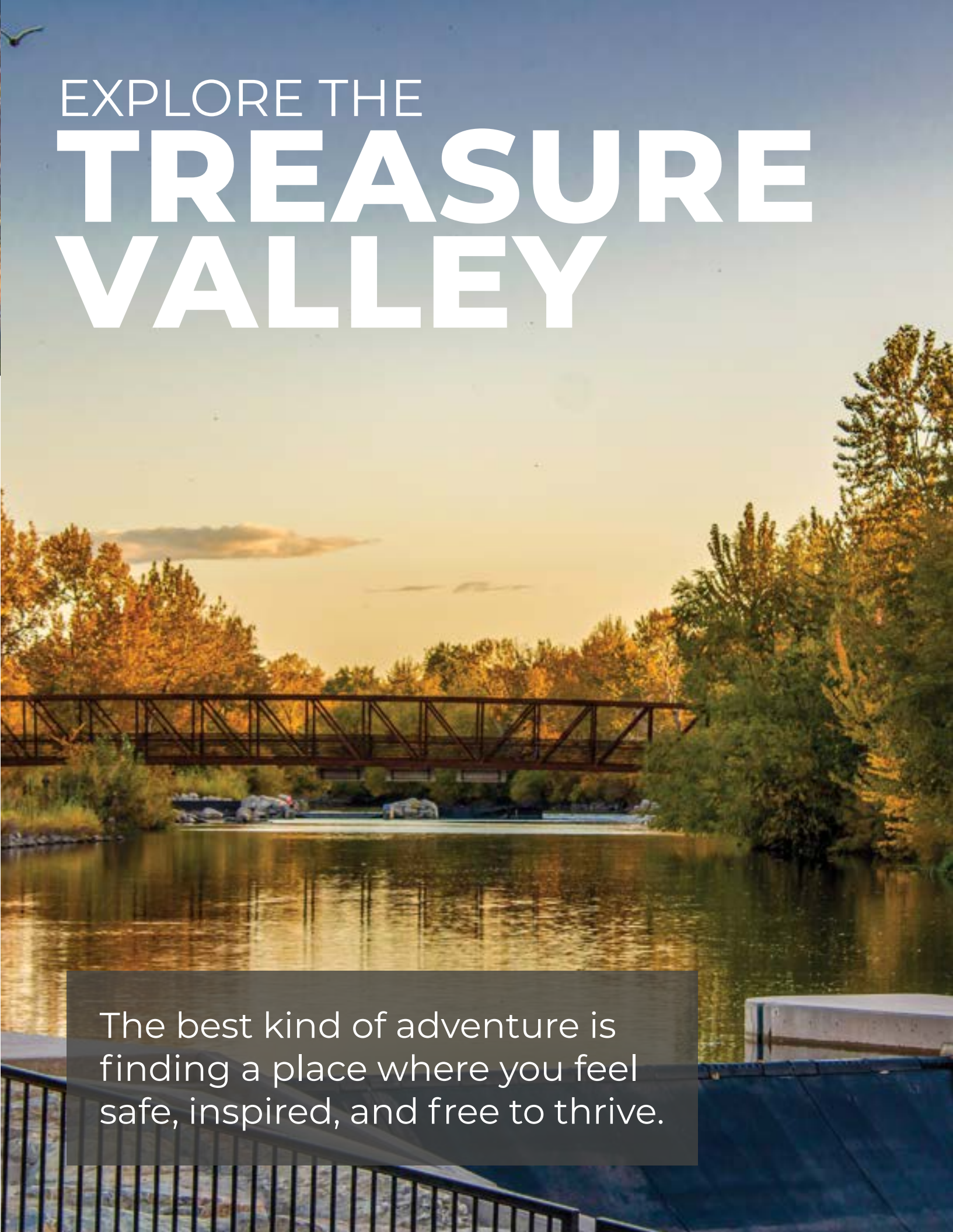
SMALL EMPLOYERS (20-49 EMPLOYEES)

- #1: UNIQ Supply
- #2: Inspire Investing
- #3: RescueStat
- #4: RecorGroup LLC
- #5: Guidant Financial

MICRO EMPLOYERS (10-19 EMPLOYEES)

- #1: Resin Architecture
- #2: Indepth Solutions
- #3: Jae Foundation
- #4: Idaho United Credit Union
- #5: Mrs. Clean

Sources: Boise Valley Economic Partnership
& Best Places to Work in Idaho



EXPLORE THE TREASURE VALLEY

The best kind of adventure is finding a place where you feel safe, inspired, and free to thrive.

WELCOME TO BOISE

Boise is a vibrant and rapidly growing city nestled in the heart of the **Treasure Valley**. Known best for its blend of charm, energy, opportunity and overall quality of life. With its stunning natural surroundings, flourishing economy, and a community that makes everyone feel at home, it's no wonder people from all walks of life are drawn here. As the **capital city** with a population of around 240,000, Boise strikes a perfect balance between offering big-city amenities and maintaining a friendly, easy-to-navigate vibe.

Outdoor enthusiasts will find their paradise here. The **Boise River** flows gracefully through the city, offering opportunities for kayaking, paddleboarding, or simply soaking in the scenery. Running alongside it is the iconic **25-mile Boise River Greenbelt**, a picturesque pathway perfect for walking, jogging, or biking while enjoying the natural beauty of the area. The nearby **Boise Foothills** add even more adventure with miles of trails for hiking and mountain biking, all with breathtaking views of the valley below. It's a magical combination of natural beauty and accessible outdoor recreation!

Boise is also a vibrant hub for arts, culture, and entertainment. Stroll through the lively **downtown area**, where historic charm meets modern flair. Discover a thriving food scene, unique local

boutiques, art galleries, and an array of nightlife options. Catch an event at the **Boise Centre** or enjoy a performance under the stars at the renowned **Idaho Shakespeare Festival**. There's always something happening to inspire and entertain.

Economically, Boise is **buzzing with opportunity**. The city boasts a dynamic job market fueled by industries like tech, healthcare, and a growing startup culture. Combine that with a relatively low cost of living, and you'll see why so many professionals and entrepreneurs choose Boise to build their careers—and their lives.

Boise has its **unique areas** which each differ in many ways. Though you can feel the similarities in every neighborhood, understanding what each area has to offer is important in figuring out where you would like to live. For many, being close to the hustle and bustle of Downtown Boise keeps things interesting and convenient. Others prefer wide open spaces where the sunsets seem to last longer and the evening air is simply filled with the sound of crickets chirping. Boise has the **best of both worlds**. This seems to be one of the driving reasons why so many have chosen to make this beautiful city their home. Take a look through Boise's unique areas, hopefully you will find a place that speaks to you. If not in Boise, then perhaps one of the other incredible cities in the Treasure Valley.

BOISE'S NEIGHBORHOODS



A. NORTH END
B. NORTHEAST BOISE
C. BOISE STATE UNIVERSITY
D. DOWNTOWN BOISE
E. BOISE BENCH

F. NORTHWEST BOISE
G. SOUTHEAST BOISE
H. SOUTH BOISE
I. WEST BOISE

NORTHEAST BOISE

Northeast Boise is a picturesque and prestigious area where the beauty of the Boise River meets the grandeur of the foothills, creating a perfect setting for refined living. At its heart is Warm Springs Avenue, a historic boulevard lined with elegant homes that exude charm and significance. The neighborhood offers easy access to the expansive trails and open spaces of the Boise Foothills, making it a haven for outdoor enthusiasts. With its peaceful residential atmosphere and proximity to downtown's cultural and civic amenities, Northeast Boise perfectly balances serenity and convenience, making it one of the city's most sought-after places to call home.

NORTH END

The North End of Boise is a charming and historic neighborhood just minutes from downtown. Known for its tree-lined streets, unique older homes, and the vibrant Hyde Park, filled with quaint shops and cozy eateries, it's a place bursting with character. Its close proximity to the foothills offers residents an ideal blend of outdoor adventure and city conveniences. Locals love escaping to Camel's Back Park, a serene urban oasis perfect for outdoor relaxation and recreation. The welcoming vibe of the North End is unmistakable, with its close-knit community, friendly front porches, and seasonal traditions like cruising down the iconic Harrison Boulevard to take in its stunning homes and rich history.



13th Street Pub & Grill in Hyde Park



Albertsons Stadium home of the Boise State Broncos



Boise river in the fall.



Jack's Urban Meeting Place (JUMP) in Downtown Boise

BOISE STATE UNIVERSITY DOWNTOWN BOISE

Nestled along the tranquil Boise River, Boise State University enjoys a picturesque setting that inspires both academic and athletic excellence. Its iconic blue turf, affectionately known as “The Blue,” has become a hallmark of college football and a standout feature of the campus. The university radiates energy and spirit, fostering a deep sense of pride and connection within the community. Game days are more than just events—they’re cherished traditions that bring fans together to celebrate and cheer for their beloved Boise State Broncos!

Downtown Boise is the energetic core of the city, where sleek office towers stand alongside cultural landmarks and buzzing culinary and entertainment hotspots. This dynamic district is a vibrant mix of urban parks, innovative businesses, and unique artisanal shops, all linked by pedestrian-friendly streets alive with activity. From year-round events to the natural beauty framing the cityscape, downtown captures Boise's innovative spirit and community heartbeat, making it the perfect place to experience the city's vitality.



Boise offers countless beautiful trails overlooking the city.



Bown Crossing in Southeast Boise

NORTHWEST BOISE

In Northwest Boise, nature isn't just a backdrop—it's a breathtaking panorama that welcomes you at every turn. Residents here enjoy the perfect harmony of urban convenience and outdoor adventure. With numerous hiking and biking trails winding through the foothills, it's easy to connect with the natural beauty that defines the area. The community's appeal is elevated by pristine golf courses and exclusive country clubs, offering a balanced blend of leisure and luxury. Situated against the foothills, Northwest Boise also provides quick access to the Greenbelt and the lively energy of downtown. The neighborhood showcases a rich mix of architectural styles, where historic charm meets modern innovation, making it a premier choice for those seeking both character and convenience.

SOUTHEAST BOISE

Southeast Boise is a vibrant community where natural beauty seamlessly blends with modern convenience. At its heart is Bown Crossing, a charming hub filled with fantastic restaurants, unique shops, and a lively atmosphere. Residents enjoy easy access to the Boise River and Greenbelt, enhancing the area's outdoor appeal. Nearby, the highly sought-after Harris Ranch community offers stunning homes, a serene setting, and close proximity to local dining and amenities. Known for its safety, friendliness, and tranquil vibe, this area is a favorite for families and outdoor enthusiasts alike.

As home to Micron Technology, one of the world's leading semiconductor companies, the area serves as a hub of innovation and opportunity. Just minutes away, Lucky Peak Reservoir provides a variety of water activities like boating, jet skiing, and swimming, making it a popular spot for adventure lovers. With its mix of recreation, community-focused amenities, and easy access to nature, SE Boise offers an active and engaging lifestyle for all.



South Boise is full of friendly faces waiting to say hello!

SOUTH BOISE

South and Southwest Boise are fast-growing areas that seamlessly blend rural charm with the convenience of suburban living. With its proximity to downtown and the airport, it's a highly desirable location for many. Expanses of open land and agricultural pockets are interspersed with modern housing developments, offering a unique balance of country living and urban accessibility. Known for its spacious lots and welcoming neighborhoods, South and Southwest Boise provides a quieter, more open environment while keeping residents closely connected to the city's amenities and opportunities.

THE BENCH

"The Bench" in Boise, perched above the city center, is a historic and diverse neighborhood known for its distinctive topography and sweeping views. With charming mid-century homes, mature trees, and a relaxed residential atmosphere, it offers a unique blend of character and convenience. Local businesses add to its charm, while its proximity to downtown and easy access to Boise's outdoor attractions and freeway make it a perfect balance of suburban tranquility and urban energy.



Boise, Idaho was ranked #4 out of 138 cities for young adults to financially thrive! -MoneyGeek

WEST BOISE

West Boise is a bustling suburban hub that combines residential comfort with vibrant commercial offerings. Home to the Boise Towne Square Mall, a variety of restaurants, shops, family-friendly attractions, and outdoor adventure stores, it's a convenient destination just off the freeway. Residents appreciate the area's short commute to Downtown Boise, Meridian, and Eagle, making it a popular choice for those seeking accessibility. With welcoming neighborhoods and numerous parks for recreation and relaxation, West Boise is perfect for families and outdoor enthusiasts alike. A standout feature is the Hyatt Hidden Lakes Reserve, a serene 53-acre sanctuary for wildlife with scenic pathways and stunning valley views.



Goody's Soda Fountain in Hyde Park



Lots of wildlife can be found on Boise's trails.

THE HOT SPOTS

NORTHEAST

COFFEE

COFFEE MILL

1 Location | Open 7 Days a Week | \$1-10

BREWED: A EUROPEAN COFFEE SHOP

1 Location | Open 7 Days a Week | \$1-10

SLICK ROCK COFFEE CO

1 Location | Open Monday-Saturday | \$1-10

RESTAURANTS

NAHM THAI & BURMESE CUISINE

Thai

1 Location | Open Tuesday-Saturday | \$10-20

RAM RESTAURANT & BREWERY

American

2 Locations | Open 7 Days a Week | \$10-20

LUCKY 13

Pizza

1 Location | Open 7 Days a Week | \$10-20

SUSHI SHACK

Sushi

2 Location | Open 7 Days a Week | \$20-30

EVENTS

IDAHO SHAKESPEARE FESTIVAL

Summer | \$40-60

WINTER GARDEN AGLOW

Winter | \$15-20

NORTH END

COFFEE

JAVA | HYDE PARK

2 Locations | Open 7 Days a Week | \$1-10

HYDE PERK COFFEE HOUSE

1 Location | Open 7 Days a Week | \$1-10

FUNKY SOL COFFEE

1 Location | Open 7 Days a Week | \$1-10

RESTAURANTS

NORTH END PIZZA

Pizza

1 Location | Open 7 Days a Week | \$10-20

13TH STREET PUB AND GRILL

Bar & Grill

1 Location | Open 7 Days a Week | \$20-30

LOST GROVE BREWING

Brewpub

2 Locations | Open 7 Days a Week | \$10-20

CLOUD 9 BREWERY

Nanopub

1 Location | Open 7 Days a Week | \$20-30

CERTIFIED KITCHEN AND BAKERY

Breakfast & Lunch

1 Location | Open 7 Days a Week | \$10-20

CASA MEXICO (13TH ST)

Mexican

4 Locations | Open Wednesday-Monday | \$10-20

GOODY'S SODA FOUNTAIN

Ice Cream Shop

1 Location | Open 7 Days a Week | \$1-10

NIGHTLIFE

PARRILLA GRILL

3 Locations | Open 7 Days a Week | \$10-20

THE ROYAL

1 Location | Open 7 Days a Week | \$1-10

HYDE PARK PUB & GRILL

1 Location | Open 7 Days a Week | \$10-20

O'MICHAEL'S PUB & GRILL

1 Location | Open 7 Days a Week | \$10-20

EVENTS

HYDE PARK STREET FAIR

Summer | Free

HALLOWEEN ON HARRISON BLVD

Fall | Free

BOISE STATE

COFFEE

HIDEOUT

1 Location | Open Wednesday-Saturday | \$1-10

ROAST @ DAWSON TAYLOR

2 Locations | Open Monday-Saturday | \$1-10

URBAN FOX COFFEE & BOBA

3 Locations | Open Monday-Friday | \$1-10

THE WHALE TEA

1 Location | Open 7 Days a Week | \$1-10

BLACK ROCK COFFEE BAR

6 Locations | Open 7 Days a Week | \$1-10

RESTAURANTS

THE JAMES KITCHEN & BAR

New American

1 Location | Open 7 Days a Week | \$20-30

FLYING PIE PIZZARIA

Pizza

7 Locations | Open 7 Days a Week | \$10-20

ELMER'S KITCHEN

Breakfast

1 Location | Open 7 Days a Week | \$10-20

PAPA JOE'S RESTAURANT

Italian

1 Location | Open 7 Days a Week | \$10-20

THE SHED

Bar & Grill

1 Location | Open 7 Days a Week | \$10-20

NIGHTLIFE

SUDS TAVERN

1 Location | Open 7 Days a Week | \$1-10

R BAR

1 Location | Open 7 Days a Week | \$1-10

ENDZONE

1 Location | Open 7 Days a Week | \$1-10

EVENTS

BOISE STATE SPORTS

All Seasons | \$20-30

MORRISON CENTER

All Seasons | \$30-100+

THE HOT SPOTS

DOWNTOWN

COFFEE

FLYING M COFFEE HOUSE

5 Locations | Open 7 Days a Week | \$1-10

DAWSON TAYLOR COFFEE ROASTERS

2 Locations | Open 7 Days a Week | \$1-10

GOLDY’S CORNER

1 Location | Open 7 Days a Week | \$1-10

JAVA | DOWNTOWN BOISE

2 Locations | Open 7 Days a Week | \$1-10

THE DISTRICT COFFEE HOUSE

1 Location | Open 7 Days a Week | \$1-10

RESTAURANTS

PERCY

American

1 Location | Open 7 Days a Week | \$30-50

FORK

American - Farm to Table

1 Location | Open 7 Days a Week | \$25-35

REEF

Island Inspired Eclectic

1 Location | Open Monday-Saturday | \$10-20

CHANDLERS

Prime Steaks & Fine Seafood

1 Location | Open 7 Days a Week | \$100+

GOLDY’S BREAKFAST BISTRO

Breakfast

1 Location | Open 7 Days a Week | \$10-20

NIGHTLIFE

AMSTERDAM LOUNGE

1 Location | Open Wednesday-Saturday | \$10-20

STRANGELOVE NIGHTCLUB

1 Location | Open Friday-Saturday | \$20-30

HUMPIN’ HANNAH’S

1 Location | Open Wednesday-Saturday | \$10-20

EVENTS

TWILIGHT CRITERIUM

Summer | Free

IDAHO POTATO DROP

Winter | Free-\$125

SOUTHEAST

COFFEE

ZERO SIX COFFEE FIX

1 Location | Open 7 Days a Week | \$1-10

URBAN FOX COFFEE & BOBA

3 Locations | Open Monday-Friday | \$1-10

ZEPPOLE

2 Locations | Open 7 Days a Week | \$1-10

RESTAURANTS

BARBACOA GRILL

Steak House

1 Location | Open 7 Days a Week | \$50-100

TAVERN AT BOWN CROSSING

Steak House

3 Locations | Open 7 Days a Week | \$20-30

TI AMO ITALIAN RISTORANTE

Italian

1 Location | Open 7 Days a Week | \$20-30

THE GRIDDLE

Breakfast

4 Locations | Open 7 Days a Week | \$10-20

LEMON TREE CO.

Sandwich Shop

3 Locations | Open 7 Days a Week | \$10-20

NIGHTLIFE

THE TK BAR

1 Location | Open 7 Days a Week | \$10-20

JIM’S ALIBI

1 Location | Open 7 Days a Week | \$20-30

THE BROADWAY BAR

1 Location | Open 7 Days a Week | \$1-10

EVENTS

THANKSGIVING BARBACOA

Fall | \$120

THE BENCH

COFFEE

PUSH & POUR

3 Locations | Open 7 Days a Week | \$1-10

PRIMAL COFFEE BOISE

1 Location | Open 7 Days a Week | \$1-10

BIKES AND BEANS

1 Location | Open Tuesday-Saturday | \$1-10

MOXIE JAVA

2 Locations | Open 7 Days a Week | \$1-10

RESTAURANTS

LUCIANO’S ITALIAN RESTAURANT

Italian

2 Locations | Open 7 Days a Week | \$20-30

WILLOWCREEK GRILL & RAW SUSHI

Sushi

1 Location | Open Monday-Saturday | \$10-20

WYLD CHILD

Burgers

1 Location | Open Monday-Saturday | \$10-20

RED BENCH PIZZA

Pizza

1 Location | Open 7 Days a Week | \$10-20

CASABLANCA CUBAN GRILL

Cuban

1 Location | Open Monday-Saturday | \$10-20

NIGHTLIFE

LITTLE DUTCH GARDEN

1 Location | Open 7 Days a Week | \$1-10

VISTA UPTOWN BAR

1 Location | Open 7 Days a Week | \$1-10

EVENTS

SPIRIT OF BOISE BALLOON CLASSIC

Summer | Free



Enjoy a variety of cocktails at Amsterdam Lounge. Make sure to try one of their famous Espresso Martinis!



Barbacoa in Southeast Boise is known for its steaks served on hot rocks.



There's a variety of delicious Mexican Food throughout the Treasure Valley



Alchemist Coffee roasts their own blends and crafts organic syrups featured in their drinks.

THE HOT SPOTS

SOUTH BOISE

COFFEE

ALCHEMIST COFFEE
3 Locations | Open 7 Days a Week | \$1-10

CAFFEINA ROASTING COMPANY
2 Locations | Open 7 Days a Week | \$1-10

RESTAURANTS

THAI CUISINE
Thai
1 Location | Open Wednesday-Monday | \$10-20

TWISTED TIMBER FOODS & BREWS
American
1 Location | Open Monday-Saturday | \$10-20

3 WOOD PIZZA AND PUB
Pizza
1 Location | Open 7 Days a Week | \$10-20

SANDBAGGER GRILL
Bar & Grill
1 Location | Open 7 Days a Week | \$10-20

DIGGS PIZZA
Pizza
1 Location | Open 7 Days a Week | \$10-20

EVENTS

GOWEN THUNDER
Summer | Free-\$100

JORDAN'S PUMPKIN PATCH AND CHRISTMAS TREE LOT
Fall/Winter | \$10-20

NORTH WEST

COFFEE

ALCHEMIST COFFEE
3 Locations | Open 7 Days a Week | \$1-10

CAFFEINA ROASTING COMPANY
2 Locations | Open 7 Days a Week | \$1-10

RESTAURANTS

BRIXX CRAFT HOUSE
American
1 Locations | Open 7 Days a Week | \$10-20

MERRITT'S FAMILY RESTAURANT
Breakfast
1 Location | Open 7 Days a Week | \$10-20

TAQUERIA EL TORITO
Mexican
1 Location | Open 7 Days a Week | \$10-20

BOISE FRY COMPANY
Burgers
6 Locations | Open 7 Days a Week | \$10-20

IDAHO PIZZA COMPANY
Pizza
7 Locations | Open 7 Days a Week | \$10-20

SOCKEYE ALEHOUSE
Pizza
1 Location | Open 7 Days a Week | \$15-25

THE LOCAL
American
1 Location | Open 7 Days a Week | \$10-20

NIGHTLIFE

HERITAGE SOCIAL CLUB - BAR & GRILL
1 Location | Open Tuesday-Sunday | \$10-20

MCCLEARY'S PUB STATE
2 Locations | Open 7 Days a Week | \$10-20

TERRY'S STATE STREET SALOON
1 Location | Open 7 Days a Week | \$10-20

THE LIFT
1 Location | Open 7 Days a Week | \$10-20

44 CLUB
1 Location | Open 7 Days a Week | \$1-10

CAPITOL BAR
1 Location | Open 7 Days a Week | \$10-20

WEST BOISE

COFFEE

COFFEE STUDIO 208
1 Location | Open 7 Days a Week | \$1-10

BLONDIES WAY COFFEE
1 Location | Open 7 Days a Week | \$1-10

COMMON GROUND COFFEE & MARKET
1 Location | Open 7 Days a Week | \$1-10

SUNSHINE SPICE BAKERY & CAFE
2 Locations | Open Wednesday-Sunday | \$10-20

THE ROASTERÉ
1 Location | Open Monday-Saturday | \$1-10

RESTAURANTS

ROMIO'S GREEK & ITALIAN KITCHEN
Greek & Italian
1 Locations | Open Monday-Saturday | \$20-30

FRESH OFF THE HOOK
Seafood
1 Location | Open Monday-Saturday | \$10-20

JALAPENOS BAR AND GRILL
Mexican
2 Locations | Open Monday-Saturday | \$10-20

BANGKOK THAI RESTAURANT
Thai
1 Location | Open Wednesday-Monday | \$10-20

CAFÉ OLÉ RESTAURANT & CANTINA
Mexican
2 Locations | Open 7 Days a Week | \$10-20

KYOTO SUSHI & JAPANESE STEAKHOUSE
Japanese
1 Location | Open Wednesday-Sunday | \$30-50

NIGHTLIFE

SAM'S SMOKEHOUSE AND SALOON
1 Location | Open 7 Days a Week | \$10-20

LEGENDS PUB & GRILL
1 Location | Open 7 Days a Week | \$10-20

THE POCKET OF BOISE
1 Location | Open 7 Days a Week | \$1-10

EVENTS

PARANORMAL CIRQUE
Summer | \$20-60

SANTA PHOTOS AT BOISE MALL
Winter | \$40-50

WELCOME TO GARDEN CITY

Whitewater park offers a unique river surfing experience on the Boise River.

Located just moments from downtown Boise, Garden City, Idaho, is a vibrant and diverse community that effortlessly blends urban energy with suburban tranquility. Though compact, Garden City shines with a rich cultural scene, easy access to outdoor recreation, and a thriving entrepreneurial spirit. Situated along the **Boise River**, Garden City is a paradise for outdoor enthusiasts. Its section of the Boise River Greenbelt, a picturesque 25-mile treelined pathway, offers scenic opportunities for biking, walking, and jogging. With easy river access for kayaking, fishing, and even surfing, and proximity to the Foothills for hiking and mountain biking, the area is perfect for adventure seekers. Sports fans can enjoy a game at the **Boise Hawks**,

the city's beloved minor league baseball team, and occasional Friday Night Fireworks for added fun. Garden City's arts and entertainment scene is equally dynamic. The **Live Work Create District** has transformed the city's old warehouse area into a creative hub filled with art galleries, studios, craft breweries, and unique boutiques. Music venues and theaters add to the city's cultural vibrancy, while **Chinden Boulevard** serves as a bustling corridor of restaurants, shops, and entertainment options. **Wine enthusiasts** will find a special treat in Garden City, with several renowned wineries and tasting rooms offering the chance to explore the region's celebrated vintages. Housing options range from riverside condos to suburban homes, catering to a variety of lifestyles and budgets.



Telaya Wine Co is a community favorite for their patio that overlooks the Boise River Greenbelt.



The Western Idaho Fair is a highlight of every summer in Garden City.

Garden City's community is as dynamic as its offerings, hosting events throughout the year. Highlights include the **Western Idaho Fair**, performances at the **Visual Arts Collective**, and live music at the **Sapphire Room** in the **Riverside Hotel**. With its proximity to Boise providing big-city conveniences—like excellent schools, healthcare, and cultural diversity—Garden City offers a tight-knit, welcoming community with something for everyone.

In the late 19th century, Chinese immigrants cultivated gardens in the area, growing produce like strawberries and onions. This agricultural heritage inspired the city's name, and Chinden Boulevard's name combines "Chinese" and "garden."

THE HOT SPOTS

COFFEE SHOPS

PUSH & POUR

3 Locations | Open 7 Days a Week | \$1-10

MOXIE JAVA BISTRO

7 Locations | Open 7 Days a Week | \$1-10

RESTAURANTS

GARIBALDI'S GARDEN CITY

Mexican

1 Location | OPEN 7 Days a Week | \$20-30

SOFIA'S GREEK BISTRO

Greek

1 Location | Open Monday-Saturday | \$10-20

CAFFÈ LUCIANO'S

Italian

2 Locations | Open Tuesday-Sunday | \$10-20

THE SANDBAR PATIO BAR & GRILL

American

1 Location | Open 7 Days a Week | \$10-20

THE STAGECOACH INN

Steakhouse

1 Location | Open Monday-Saturday | \$30-50

LING & LOUIE'S ASIAN BAR & GRILL

Asian Fusion

2 Locations | Open 7 Days a Week | \$20-30

UNCLE GIUSEPPES

Italian

1 Location | Open 7 Days a Week | \$10-20

EL GALLO GIRO

Mexican

2 Locations | Monday-Saturday | \$10-20

NIGHTLIFE

WESTERN COLLECTIVE

1 Location | Open 7 Days a Week | \$10-20

PACERO WINE BAR

1 Location | Open 7 Days a Week | \$10-20

YARDARM

1 Location | Spring-Fall | \$10-20

THE SAPPHIRE ROOM

1 Location | Monday-Friday | \$20-30

EVENTS

WESTERN IDAHO FAIR

Summer | \$20-50

BOISE HAWKS BASEBALL

Summer | \$20-50

WELCOME TO MERIDIAN

Shop, dine, and unwind at The Village at Meridian!

By 2024, Meridian's population had grown to nearly 130,000, reflecting a 1,200% increase over 32 years, making it Idaho's second-largest city.
-Boise Dev

Meridian located in the heart of the Treasure Valley, is one of Idaho's fastest-growing cities and a hub of suburban charm and urban convenience. Just west of Boise, it's the state's second-largest city and a favorite for families and professionals alike. Known for its welcoming atmosphere, Meridian offers the perfect balance of community-focused living and easy access to essential amenities.

The city's thriving economy is one of its standout features, with robust growth in industries like technology, healthcare, and retail, providing ample job opportunities. Proximity to Boise expands career prospects even further, making Meridian a strategic location for those seeking professional advancement while enjoying a family-friendly environment.

Meridian also shines in recreation and

entertainment. Residents can explore an array of parks, walking trails, and community centers or enjoy upscale shopping, dining, and entertainment at **The Village at Meridian**, a popular social hub. The city's prime location offers easy access to outdoor adventures, including skiing, hiking, and fishing in the nearby **Boise Mountains** and along the **Snake River**.

Downtown Meridian, or **Old Town Meridian**, combines small-town charm with vibrant activity. It's home to unique shops, delicious restaurants, and community events hosted in and around the picturesque plaza at **Meridian City Hall**. Events like **Meridian Dairy Days** celebrate the city's agricultural roots, while the **Initial Point Gallery** showcases rotating exhibits from local artists. Movie nights in the park and activities like **Topgolf**, bowling, water parks, and go-kart racing add to the city's year-

round appeal. Racing fans can also enjoy nearly nine months of action at the **Meridian Speedway**.

Meridian's diverse housing options range from affordable starter homes to luxurious properties, catering to all stages of life. The city is also home to several luxurious golf courses and private golf clubs, adding to its appeal for those seeking a refined lifestyle. The city's neighborhoods are celebrated for their safety, cleanliness, and strong sense of community.

With its high quality of life, vibrant entertainment options, strong economy, and welcoming spirit, Meridian is a standout destination for anyone considering a move. Whether you're a young professional, growing family, or retiree, Meridian offers something for everyone, making it an exceptional place to call home.

THE HOT SPOTS

COFFEE SHOPS

LUCKY PERK COFFEE

2 Locations | Open 7 Days a Week | \$1-10

ANTIGUA COFFEE COMPANY

2 Locations | Open Monday-Saturday | \$1-10

MOUNTAIN TIMBER COFFEE

1 Location | Open 7 Days a Week | \$1-10

NAZCA COFFEE

1 Location | Open 7 Days a Week | \$1-10

ROYAL COFFEE CO

1 Location | Open 7 Days a Week | \$1-10

RESTAURANTS

KAHOOTZ STEAK & ALEHOUSE

Steakhouse

1 Location | Monday-Saturday | \$10-25

THE CURB BAR & GRILL

Bar Fare

1 Location | Open 7 Days a Week | \$10-20

GIGGY D'S

Sports Bar & Family Grill

1 Location | Open 7 Days a Week | \$10-20

IL SUGO ITALIAN KITCHEN

Italian

1 Location | Open Monday-Saturday | \$20-30

RED FORT CUISINE OF INDIA

Indian

1 Location | Open Monday-Saturday | \$1-10

NIGHTLIFE

FRONTIER CLUB

1 Location | Open 7 Days a Week | \$10-20

127 SALOON

1 Location | Wednesday-Saturday | \$10-20

THE ROOSEVELT

1 Location | Open 7 Days a Week | \$10-20

EVENTS

MERIDIAN SPEEDWAY

Spring-Fall | \$15

WINTER LIGHTS PARADE

Winter | Free

TREE LIGHTING & SANTA AT THE VILLAGE

Winter | Free

MERIDIAN DAIRY DAYS

Summer | Free



Access to the Boise River and Greenbelt is a beloved community feature!

Eagle is a picturesque city that epitomizes elegance, luxury, and small-town charm, offering an extraordinary quality of life. Known for its exclusive riverfront estates and some of the most expensive homes in the Treasure Valley, Eagle boasts gated communities and waterfront properties adorned with lush landscaping that exude sophistication. The city seamlessly blends upscale living with the serenity of Idaho's natural beauty, making it one of the most desirable places to call home.

Downtown Eagle enhances this charm with its walkable streets, boutique shops, fine dining, and art galleries, creating a community-focused yet refined atmosphere. The nearby **Eagle Luxe Reel Theatre** shopping center adds to the city's appeal, offering an upscale mix of local businesses, amenities, and entertainment options. Eagle is also home to prestigious golf courses and exclusive country clubs, providing

residents with a luxurious lifestyle centered around recreation, leisure, and social engagement.

The city is renowned for its commitment to outdoor living. **Eagle Island State Park**, spanning 545 acres along the Boise River, is a beloved destination featuring a swimming beach, fishing, paddleboarding, a waterslide, picnic areas, bird-watching, and miles of trails for horseback riding, hiking, and disc golf. The Greenbelt offers scenic riverfront paths for biking and walking, while the **Ada/Eagle Sports Complex** and **Bike Park** provides facilities for BMX riders, skateboarders, basketball players, and mountain biking enthusiasts, with trails connecting to the Ridge to Rivers system for longer adventures.

Eagle's appeal extends to **equestrian lovers** and those seeking farm-friendly neighborhoods. With spacious properties and a rural charm that complements its elegance, the city offers



Eagle features stunning waterfront homes and serene water features citywide!

Eagle has experienced significant growth, evolving from a small village of 350 residents in 1970 to a bustling community of just over 32,000 by 2023. This expansion has been marked by the development of high-end custom homes and new subdivisions, reflecting the city's appeal as a desirable place to live.

something unique for every lifestyle. Its public parks and open spaces further enhance its family-friendly reputation, while the highly rated schools make it a top choice for families.

Cultural offerings abound, with the **Eagle Performing Arts Center** hosting year-round performances and the **Eagle Arts Commission** fostering the local artistic community through events and exhibitions. The city's vibrant downtown, with its historic feel, comes alive with festivals and gatherings that strengthen its close-knit community vibe.

For those seeking a lifestyle that blends opulence with warmth, Eagle delivers. Its unparalleled blend of luxury living, natural beauty, and a welcoming spirit ensures that residents enjoy a harmonious balance of elegance and togetherness, set against the breathtaking backdrop of Idaho's Treasure Valley.

THE HOT SPOTS

COFFEE SHOPS

EAGLE COFFEE AND BAKERY
1 Location | Open 7 Days a Week | \$1-10

THE PERKS OF LIFE
1 Locations | Open 7 Days a Week | \$1-10

JOVINOS
1 Location | Open 7 Days a Week | \$1-10

KEVISTA COFFEE EAGLE
1 Location | Monday-Saturday | \$1-10

COFFEE & SUPPLY CO
1 Location | Monday-Saturday | \$1-10

RESTAURANTS

REMBRANDTS
Cafe Eats
1 Location | Open 7 Days a Week | \$10-20

CRAVE KITCHEN & BAR
Fine Dining
1 Location | Open 7 Days a Week | \$30-50

COA DEL MAR
Seafood
1 Location | Open 7 Days a Week | \$50-100

BARDENAY RESTAURANT & DISTILLERY
American
3 Locations | Open 7 Days a Week | \$10-20

DAVINCI'S
Italian
1 Location | Open 7 Days a Week | \$20-30

NIGHTLIFE

CORNER HUSTLE NEIGHBORHOOD BAR
1 Location | Open 7 Days a Week | \$10-20

VAULT EAGLE
1 Location | Open 7 Days a Week | \$50-100

MCCLEARY'S PUB STATE
2 Locations | Open 7 Days a Week | \$10-20

EVENTS

EAGLE FUN DAYS
Summer | Free

EAGLE CONCERT SERIES
Summer | Free

NIGHT OF AS THOUSAND PUMPKINS
Fall | Free

EAGLE COUNTRY CHRISTMAS
Winter | Free

WELCOME TO KUNA

Swan Falls Dam, constructed in 1901 by the Trade Dollar Mining and Milling Company, is the oldest hydroelectric dam on the Snake River. It was built to provide power for mining operations in the nearby Owyhee Mountains. Today, the dam is operated by Idaho Power and continues to produce hydroelectric power, albeit with upgrades to improve efficiency and reduce environmental impacts.

Kuna is more than a city—it's a lifestyle choice for those seeking the perfect blend of peaceful country living and convenient city access. Located just a short drive from Boise, Kuna offers a slower pace and strong sense of community, making it an inviting place to call home.

With its wide-open horizons and bright future, Kuna embodies the essence of small-town charm combined with natural beauty and modern growth. Surrounded by Idaho's stunning landscapes, residents enjoy abundant outdoor recreation, from birdwatching and hiking to fishing and picnicking. **Swan Falls**, located along the Snake River, is a popular spot for fishing and enjoying serene river views.

A standout feature is the **Morley Nelson Snake River Birds of Prey National Conservation Area**,

home to one of the densest populations of nesting raptors in North America, where around 800 pairs of hawks, owls, eagles, and falcons visit annually. The **Indian Creek Greenbelt**, a scenic pathway through lush landscapes and along tranquil waters, offers the perfect setting for walking, jogging, or biking.

Downtown Kuna reflects the city's warm and vibrant spirit, with local shops and restaurants lining the streets, offering unique shopping and dining experiences. **Main Street** serves as the heart of community activity, hosting events like the annual **Kuna Days Festival**, featuring parades, live music, and a spectacular fireworks show. Adventure seekers can explore the nearby **Kuna Caves**, a volcanic wonder offering a rare spelunking experience. Parks throughout the city come alive with outdoor concerts, festivals, and farmers' markets, fostering a lively atmosphere for residents and visitors alike.

Adding to its appeal is the **recently established Meta (Facebook) Data Center**, a state-of-the-art facility that highlights Kuna's growth and increasing importance as a regional hub.

Housing in Kuna ranges from charming starter homes to spacious residences in farm-friendly neighborhoods. Known for its safety, community vibe, and beautiful surroundings, the city offers options to suit various lifestyles. New developments are adding to the mix, accommodating Kuna's growing popularity.

Despite its growth, Kuna has preserved its close-knit, small-town feel. Whether it's the friendly community, outdoor adventures, or its convenient proximity to Boise, Kuna provides an exceptional blend of rural and urban living. For those seeking a balanced lifestyle, Kuna, Idaho, is a place that feels like home.

THE HOT SPOTS

COFFEE SHOPS

LATTE DA

1 Location | Open Monday- Saturday | \$1-10

MOXIE JAVA

7 Locations | Open 7 Days a Week | \$1-10

BEANS & BREWS COFFEEHOUSE

1 Location | Open 7 Days a Week | \$1-10

RESTAURANTS

ENRIQUE'S MEXICAN RESTAURANT

Mexican

1 Location | Open Tuesday-Saturday | \$20-30

RICEWORKS

Sushi & Asian Street Food

2 Locations | Open Wednesday-Sunday | \$10-20

THE PORK BELLY

Breakfast

1 Location | Open 7 Days a Week | \$10-20

FIESTA GUADALAJARA

Mexican

5 Locations | Open 7 Days a Week | \$10-20

SMOKY MOUNTAIN PIZZERIA GRILL

Pizza & Italian

10 Locations | Open 7 Days a Week | \$10-20

QUIK WOK RESTAURANT

Chinese

3 Locations | Open Wednesday-Monday | \$10-20

LIMA LIMON PERUVIAN

Peruvian

1 Location | Open Tuesday-Saturday | \$20-30

NIGHTLIFE

LONGHORN LOUNGE

1 Location | Open 7 Days a Week | \$10-20

NOCTURNO LOUNGE

1 Location | Open Wednesday-Saturday | \$20-30

BIG MIC'S SALOON & BBQ SMOKEHOUSE

1 Location | Open 7 Days a Week | \$10-20

EVENTS

KUNA HOMETOWN FAIR

Spring | Free

4TH OF JULY FIREWORKS SHOW

Summer | Free

KUNA DAYS

Summer | Free

WELCOME TO NAMPA

Lake Lowell is a popular summer boating spot.

Nampa, located in Canyon County, is the third-largest city in Idaho and one of the fastest-growing cities in the country. Known for its warm community spirit, affordability, and rich agricultural history, it offers residents a unique blend of rural charm and urban amenities.

Outdoor recreation is abundant, with over 24 parks scattered across the city. **Lake Lowell**, located just south of the city, is a popular destination for boating, fishing, swimming, and wildlife viewing. The **Deer Flat National Wildlife Refuge**, located on the lake's shores, provides excellent opportunities for bird-watching, hiking, horseback riding, and hunting.

Nampa's downtown area, centered around **2nd Street South**, is a vibrant district filled with locally owned businesses, restaurants, and breweries. The historic **Nampa Train Depot Museum** is a central feature of the area and reflects the city's rich heritage.

Home to the **Ford Idaho Center**, one of the most versatile entertainment venues in the Pacific Northwest, frequently hosts concerts, rodeos, trade shows, and sporting events. A community favorite is the **Snake River Stampede Rodeo**, one of the top professional rodeos in the country, and the **Festival of the Arts**, a celebration of local art and culture.

In terms of housing, Nampa offers a diverse selection of homes at price points more affordable than many other parts of the Treasure Valley. Neighborhoods in Nampa are known for their friendly atmosphere, spacious lots, and well-maintained public areas. Its business-friendly environment and strategic location in the Treasure Valley also make it a hub for various industries, contributing to the city's robust economy.

Nampa has a thriving agricultural sector and is home to the world's largest manufacturer of concentrated milk, the **Sorrento Lactalis**



factory. Additionally, the city boasts a significant historical landmark in its sugar beet factory, reflecting Nampa's deep roots in agriculture and its key role in Idaho's sugar beet industry.

With its friendly community, affordable living, and convenient location, Nampa, Idaho is an excellent place to call home. Whether you're a young professional, a growing family, or looking for a relaxed place to retire, Nampa has something to offer everyone.

In 2020, Nampa became the first location in Idaho to host an Amazon fulfillment center, marking a significant milestone in the city's economic development. Spanning approximately 650,000 square feet, the facility has created over 1,000 full-time jobs, contributing significantly to the local job market. To further support the region, Amazon has committed over \$14 million for local road improvements to accommodate increased traffic, enhancing transportation infrastructure and bolstering the area's economic resilience.

THE HOT SPOTS

COFFEE SHOPS

FLYING M COFFEE GARAGE

5 Locations | Open 7 Days a Week | \$1-10

ONE11 PRESS

1 Locations | Open Monday- Saturday | \$1-10

MOXIE JAVA

7 Locations | Open 7 Days a Week | \$1-10

FIRST & SECOND COFFEE CO.

1 Location | Open Monday-Saturday | \$1-10

HARVESTERS COFFEE CO

1 Location | Open Monday-Saturday | \$1-10

RESTAURANTS

BRICK 29 BISTRO

Elevated American

1 Location | Open Tuesday-Saturday | \$30-50

JAK*S PLACE NEIGHBORHOOD GRILL

American

1 Location | Open 7 Days a Week | \$10-20

JALAPENOS BAR AND GRILL

Mexican

2 Locations | Open Monday-Saturday | \$10-20

MESA TACOS + TEQUILA

Mexican

1 Location | Open 7 Days a Week | \$10-20

ITALIAN TO GO / BIT OF ITALY

Italian

1 Location | Open Tuesday-Saturday | \$10-20

NIGHTLIFE

THE SYRINGA

1 Location | Open 7 Days a Week | \$10-20

THE SICK STAG

1 Location | Open Tuesday-Sunday | \$10-20

CRAFT LOUNGE

1 Location | Open Monday-Saturday | \$20-30

EVENTS

CHRISTMAS TREE LIGHTING & SHOP SMALL SATURDAY

Winter | Free

SNAKE RIVER STAMPEDE

Summer | \$15-40

WARBIRD ROUNDUP

Summer | \$30-50

NAMPA ANIMAL DAYS

Spring | \$15

WELCOME TO CALDWELL

The Caldwell Night Rodeo is an annual event with fun for the whole family.

Welcome to Caldwell, Idaho, a vibrant city in Canyon County where small-town charm meets modern convenience.

Located just a short drive from Boise, Caldwell offers easy access to shopping, dining, and entertainment year-round, while maintaining its unique character and thriving community spirit.

Wine enthusiasts will delight in the nearby **Snake River Wine Region**, home to award-winning wineries and picturesque vineyards. These celebrated establishments offer wine tastings and tours, showcasing a diverse selection of wines that beautifully reflect the region's distinctive terroir. It's a must-visit destination for locals and visitors alike.

Caldwell's downtown area is a lively hub filled with historic buildings, locally owned businesses, and charming boutiques. The **Caldwell Farmers Market** invites you to sample fresh produce, artisanal goods, and connect with local vendors. At the heart of downtown is **Indian Creek Plaza**, a dynamic gathering space that transforms with the seasons—featuring an outdoor ice rink in

winter, and vibrant farmers' markets and live concerts in the warmer months. This bustling plaza adds to Caldwell's quaint charm and serves as a beloved spot for residents and visitors.

The city's agricultural roots run deep, surrounded by sprawling farmlands and orchards that reflect its rich heritage. This legacy is celebrated annually at the **Caldwell Night Rodeo**, a cherished event showcasing thrilling rodeo competitions, western traditions, and family-friendly entertainment.

Outdoor enthusiasts will find plenty to explore near Caldwell. **Lake Lowell**, located just south of the city, is perfect for boating, fishing, and bird-watching. The rugged **Owyhee Mountains** provide opportunities for hiking, camping, and immersing yourself in the wilderness.

Caldwell's commitment to community is evident in its parks and recreational facilities. **Indian Creek Park**, with its walking paths, playgrounds, and picnic areas, is a favorite destination for relaxation. A stroll through the **Steunenberg Historic**



Indian Creek Plaza comes to life in the winter.

Caldwell was officially platted in December 1883 by the Idaho-Oregon Land Improvement Company as a railroad stop on the way to the Pacific Ocean. Robert Strahorn, one of the company's owners, named the town after his friend and business partner, Alexander Caldwell.

District offers a glimpse into the city's past, with beautifully preserved homes and landmarks that tell the story of Caldwell's rich history.

Caldwell's housing market offers a mix of affordability and growth, making it an appealing choice for many. With a range of options from established neighborhoods featuring charming, budget-friendly homes to modern new developments in expanding areas, there's something for everyone. Its close proximity to the freeway ensures an easy commute to other cities across the Treasure Valley, making it especially attractive for those seeking a balance of convenience and value.

Whether you're enjoying a glass of locally crafted wine, attending a community event, or exploring the city's natural and historic treasures, Caldwell offers a life full of memorable moments and a welcoming sense of belonging. Discover the charm, heritage, and vibrant spirit that make Caldwell, Idaho, a truly special place to call home.

THE HOT SPOTS

COFFEE SHOPS

FLYING M COFFEESHOP

5 Locations | Open 7 Days a Week | \$1-10

JACK HENRY COFFEE HOUSE

2 Locations | Open 7 Days a Week | \$1-10

THE JAVA STATION

1 Location | Open 7 Days a Week | \$1-10

TWISTED BUTLER

2 Locations | Open Monday-Saturday | \$1-10

BOND AND BEVEL

1 Location | Open Monday-Saturday | \$1-10

RESTAURANTS

AMANO

Mexican

1 Location | Open Tuesday-Sunday | \$25-35

GRIT 2C

New American

1 Location | Open Tuesday-Sunday | \$10-20

INDIAN CREEK STEAKHOUSE

Steak House

1 Location | Open 7 Days a Week | \$30-50

MR. V'S FAMILY RESTAURANT

Breakfast/Family Restaurant

1 Location | OPEN 7 Days a Week | \$10-20

STEWART'S BAR AND GRILL

American

1 Location | Open Monday-Sunday | \$10-20

NIGHTLIFE

BLUE EYE NIGHT CLUB

1 Location | Open 7 Days a Week | \$30-40

MCCLEARY'S CALDWELL

3 Locations | Open 7 Days a Week | \$10-20

2C WINE DOWN

1 Location | Open Tuesday-Sunday | \$10-20

EVENTS

**WINTER WONDERLAND
AT INDIAN CREEK PLAZA**

Winter | Free

CALDWELL NIGHT RODEO

Summer | \$25-50

CANYON COUNTY FAIR

Summer | \$10-30

SUNNY SLOPE WINE TRAIL

Spring-Fall | \$20-100

WELCOME TO MIDDLETON

Middleton offers a peaceful retreat from the hustle of city life!

Middleton, Idaho, is a charming small town in Canyon County that offers an idyllic rural lifestyle while remaining within easy reach of Idaho's bustling urban centers.

Situated about 25 miles west of Boise, Middleton is the oldest settlement in the county, steeped in history and defined by its close-knit community spirit and natural beauty. The town's agricultural roots and open spaces create a serene atmosphere, making it a haven for those seeking a slower pace of life.

Surrounded by farmland, creeks, the Boise River, and rolling foothills, Middleton is a paradise for nature lovers and outdoor enthusiasts. Fishing, hiking, and bird-watching are readily available, providing residents with a peaceful retreat under starry skies. The tranquil landscape offers a picturesque escape from the fast-paced city lifestyle.

At the heart of Middleton lies its quaint downtown

area, where local businesses and restaurants exude a welcoming small-town charm. Community spirit thrives here, with events like the annual **Harvest Festival** drawing residents together for parades, live music, delicious food, and fun-filled activities.

Middleton's numerous parks enhance its family-friendly appeal. **Foote Park** and **Hawthorne Park** offer expansive green fields, playgrounds, and picnic areas, providing safe, inviting spaces for all ages. These parks are more than recreational spots; they are vibrant community hubs that host a variety of events throughout the year, from outdoor concerts and festivals to seasonal celebrations like Easter egg hunts, Fourth of July fireworks, and winter holiday light displays.

With its convenient proximity to Interstate 84, Middleton allows easy access to larger cities while preserving its rural charm. Housing options range from historic homes rich in character to

newer residential developments, catering to a variety of lifestyles and preferences. Each home is set against the backdrop of open fields, picturesque farms, and gently rolling hills, offering breathtaking views and a rare sense of serenity.

Middleton's tranquil pastoral atmosphere, combined with its strong sense of community and diverse housing options, makes it an ideal place to put down roots. For those seeking a lifestyle that blends natural beauty, historic charm, and modern conveniences, Middleton offers an unparalleled opportunity to live and thrive in a welcoming, picturesque setting.

Middleton, located near Idaho's wine country, offers wine enthusiasts opportunities to explore local vineyards. This, along with its small-town charm and proximity to Boise, has contributed to significant population growth, increasing from 2,978 in 2000 to just over 11,000 in 2023.

THE HOT SPOTS

COFFEE SHOPS

MIDDLETON ESPRESSO CAFE
1 Location | Open 7 Days a Week | \$1-10

RESTAURANTS

CASA MEXICO
Mexican
4 Locations | Open 7 Days a Week | \$10-20

THE CHAPP WINE & TAP
Bar & Grill
1 Location | Open 7 Days a Week | \$10-20

TSAI'S KITCHEN
Chinese
1 Location | Open Tuesday-Saturday | \$1-10

GARBONZO'S PIZZA
Pizza
3 Locations | Open 7 Days a Week | \$10-20

THE ORIGINAL SUNRISE CAFE
Breakfast
3 Locations | Open 7 Days a Week | \$10-20

EL SEÑOR POLLO MEXICAN GRILL
Mexican
1 Location | Open Monday-Saturday | \$10-20

TACOS EL RANCHO
Mexican
1 Location | Open 7 Days a Week | \$10-20

THE RUSTIC OVEN CO.
Bakery & Cafe
1 Location | Open Monday-Saturday | \$10-20

NIGHTLIFE

THE VAULT 21 CLUB
1 Location | Open Tuesday-Sunday | \$10-20

THE BANK
1 Location | Open 7 Days a Week | \$10-20

EVENTS

MIDDLETON CHRISTMAS PARADE
Winter | Free

FOURTH OF JULY PARADE
Summer | Free

FALL CRAFT BAZAAR
Fall | Free

CHRISTMAS TREE LIGHTING
Winter | Free

MIDDLETON MARKET
Summer | Free

WELCOME TO STAR

Enjoy country living with convenient city amenities nearby.

Nestled along the picturesque Boise River, Star, Idaho, is a peaceful sanctuary that blends rural charm with the conveniences of suburban living. Located about 20 miles west of Boise, Star offers residents the serenity of a small town while keeping the amenities of Idaho's bustling capital within easy reach.

Surrounded by nature, Star provides abundant opportunities for outdoor recreation. The area is crisscrossed with trails perfect for horseback riding and cycling, while the Boise River offers year-round fishing for enthusiasts. With easy access to Idaho's stunning mountains and ski resorts, residents can enjoy outdoor adventures in every season.

Star's warm, welcoming atmosphere is evident in its community-focused spirit. Local businesses, charming eateries, and essential services cater to the town's needs, creating a blend of hometown

charm and modern convenience. Seasonal events like the **Star Fall Festival** and the festive **Christmas Bazaar** bring the community together, celebrating the tight-knit bonds that define Star.

Families and outdoor lovers alike will appreciate Star's variety of parks and recreational spaces, ideal for relaxation and play. The town's housing options are equally diverse, ranging from comfortable suburban homes and sprawling country estates to new developments designed to suit various lifestyles and budgets. All of this is set against a scenic backdrop of open spaces and small-town charm, making Star a sought-after destination for those seeking tranquility and a strong sense of community.

Star's safe, family-friendly neighborhoods and balanced economy further enhance its appeal. Local businesses, agriculture, and

proximity to Boise's economic hubs provide residents with job opportunities while supporting the town's stable growth.

From its serene landscapes and welcoming community to its convenient amenities, Star truly shines as an exceptional place to call home. For those drawn to the tranquility of small-town living with the perks of nearby city life, Star offers the perfect blend of both worlds.

In the 19th century, travelers journeying to Middleton and Boise used a star on the local schoolhouse as a navigational aid to determine east and west. This prominent feature led to the town being named "Star."

THE HOT SPOTS

COFFEE SHOPS

BORDERTOWN COFFEE & BAKE SHOP

1 Location | Open 7 Days a Week | \$1-10

BEANS & BREWS COFFEEHOUSE

2 Locations | Open 7 Days a Week | \$1-10

PRIMAL COFFEE

1 Location | Open 7 Days a Week | \$1-10

RESTAURANTS

RUSTIC TABLE STEAK HOUSE + BAR

Steak House

1 Location | Open 7 Days a Week | \$10-20

SULLY'S PUB & GRILL

Irish Pub

1 Location | Open 7 Days a Week | \$10-20

TAPHOUSE PUB & EATERY

Sports Bar

2 Locations | Open 7 Days a Week | \$10-20

PROOF CRAFT KITCHEN & COCKTAILS

American

1 Location | Open 7 Days a Week | \$10-20

STAR COUNTRY CAFE

Breakfast / Family Restaurant

1 Location | Open 7 Days a Week | \$10-20

EL MARIACHI LOCO RESTAURANTE

Mexican

1 Location | Open 7 Days a Week | \$10-20

ASIAN WOK CHINESE RESTAURANT

Chinese

1 Location | Open Monday-Saturday | \$10-20

IDAHO SUSHI COMPANY

Japanese

1 Location | Open Monday-Saturday | \$10-20

NIGHTLIFE

BEER GUYS SALOON

1 Location | Open 7 Days a Week | \$10-20

HELINA MARIE'S

1 Location | Open Tuesday- Saturday | \$10-20

EVENTS

**CHRISTMAS AT THE RIVERHOUSE
AND TREE LIGHTING**

Winter | Free

**CITY OF STAR
HOMETOWN CELEBRATION**

Summer | Free

WELCOME TO EMMETT

Tucked away in the picturesque Payette River Valley, Emmett, Idaho, is a tranquil small town brimming with charm. Located just 30 miles north of Boise, Emmett offers the perfect blend of rural living and convenient access to city amenities, making it a haven for those seeking a quieter pace of life.

Known as the “Valley of Plenty,” Emmett has long been celebrated for its agricultural heritage. The fertile farmlands surrounding the town produce an abundance of cherries, apples, peaches, and other crops. This legacy is proudly celebrated each June during the **Cherry Festival**, a beloved event that draws residents and visitors for days of fun, food, and community spirit.

Nature lovers will find plenty to enjoy in Emmett. The nearby **Black Canyon Dam** on the Payette River is a popular destination for fishing, camping, and picnicking, while the rolling foothills and

sprawling landscapes offer ideal spots for hiking, biking, and horseback riding. During winter, the surrounding mountains transform into a snowy playground for skiing and snowboarding, with slopes just over an hour away.

Downtown Emmett is a delightful mix of charm and character, with its Main Street lined with quaint shops, local businesses, and family-owned restaurants that embody the town’s friendly spirit. Housing in Emmett ranges from charming historic homes with large yards to modern new builds, all offered at prices more affordable than those in larger urban areas. This makes Emmett an appealing choice for families, retirees, and professionals seeking a serene and budget-friendly place to live.

The community spirit in Emmett is vibrant, showcased through a calendar of events that bring people together year-round. Highlights include the **Gem County Fair and Rodeo**, the **Harvest Festival**,

and the **Street Fair**, all of which reflect the town’s strong sense of connection and tradition.

Despite its small size, Emmett offers essential services, including **Valor Health**, a full-service hospital and network of healthcare providers that ensure residents have access to quality medical care.

Emmett is a hidden treasure in the Gem State, offering serene landscapes, a welcoming community, and a lifestyle that balances rural charm with modern convenience. For those looking to live, work, and play in a close-knit town surrounded by natural beauty, Emmett is a must-consider destination.

Flowing through Emmett, the Payette River offers recreational opportunities such as fishing, boating, and scenic views, contributing to the city’s appeal for outdoor enthusiasts.

THE HOT SPOTS

COFFEE SHOPS

BANDUCCI’S TANNING & ESPRESSO
1 Location | Open 7 Days a Week | \$1-10

HEBREWS COFFEE
1 Location | Open Monday-Saturday | \$1-10

LE CAFÉ DE BRUNSWICK
1 Location | Open Monday-Saturday | \$1-10

RESTAURANTS

ELEMENTS KITCHEN + BAR
Breakfast / American
1 Location | Open 7 Days a Week | \$1-10

FOURTH STREET FUSION
BBQ & Italian
1 Location | Open Wednesday-Sunday | \$1-10

BLUE RIBBON CAFÉ & BAKERY
American
1 Location | Open Monday-Saturday | \$10-20

PIZZA FACTORY
Pizza
1 Location | Open 7 Days a Week | \$10-20

WOOD DRAGON RESTAURANT
Chinese
1 Location | Open 7 Days a Week | \$10-20

THE CORNER DELI
Sandwich Shop
1 Location | Open Monday-Friday | \$10-20

COWBOYS CHOPHOUSE
Steak House
1 Location | Open Monday-Saturday | \$30-50

NIGHTLIFE

THE ROUNDUP BAR
1 Location | Open 7 Days a Week | \$10-20

GEM LOUNGE
1 Location | Open Tuesday-Saturday | \$10-20

HUCK-N-FINNS SPORTS BISTRO
1 Location | Open Wednesday-Saturday | \$1-10

EVENTS

EMMETT CHERRY FESTIVAL
Summer | Free

HARVEST STREET FAIR AND FESTIVAL
Fall | Free

CHRISTMAS WITH SANTA
Winter | Free



WELCOME TO MOUNTAIN HOME

Mountain Home Air Force Base is an integral part of the city.

Nestled in the high desert of southern Idaho, **Mountain Home** is a welcoming city that combines small-town charm with a proud military heritage. Located just 40 miles southeast of **Boise**, it offers residents the perfect balance of quiet living and convenient access to the amenities of Idaho's capital city.

Mountain Home is perhaps best known for **Mountain Home Air Force Base**, a vital part of the community. The base brings a strong sense of pride and purpose to the area, contributing to the city's identity and fostering a close-knit, supportive atmosphere for military families and civilians alike.

The city's stunning surroundings offer countless opportunities for outdoor recreation. **Desert Canyon Golf Course**, a local favorite, provides a beautifully maintained course with views of the surrounding desert. For nature enthusiasts, **Bruneau Dunes State Park**, just a short drive away, boasts the tallest single-structured sand dune in North America and is a popular spot for hiking, sandboarding, and stargazing. Nearby reservoirs, including **CJ Strike** and **Anderson Ranch**, offer boating, fishing, and camping, making Mountain Home a haven for outdoor lovers.

Downtown Mountain Home is a hub of local activity, featuring a variety of shops, restaurants, and small businesses that reflect the community's welcoming spirit. Seasonal events such as the **Air Force Appreciation Day Parade**, one of the largest in the state, highlight the town's strong sense of community and respect for its military roots.

Housing in Mountain Home is both affordable and diverse, with options ranging from established neighborhoods to new developments. The city's lower cost of living, combined with its safe and friendly neighborhoods, makes it an attractive choice for families, retirees, and professionals.

With its unique blend of military pride, outdoor adventure, and small-town charm, Mountain Home offers a lifestyle rich in community and opportunity. Whether you're drawn by its proximity to natural wonders, its welcoming atmosphere, or its connection to the Air Force, Mountain Home is a place where you can truly feel at home.



WELCOME TO TWIN FALLS

Perrine Bridge is an iconic landmark in Twin Falls.

In southern Idaho, Twin Falls is a vibrant city celebrated for its stunning natural beauty, strong community spirit, and thriving economy. As the largest city in the **Magic Valley**, it serves as a hub for culture, commerce, and outdoor adventure, offering an exceptional quality of life for residents.

One of Twin Falls' defining features is the **Snake River Canyon**, a breathtaking natural landmark that carves through the landscape. The iconic **Perrine Bridge**, spanning the canyon, is a year-round hotspot for **BASE jumping** and provides panoramic views of the river below. For those seeking relaxation, the **Snake River** offers **kayaking, paddleboarding, fishing, and boating** opportunities. The city is also home to **Shoshone Falls**, often referred to as the "**Niagara of the West**." Towering higher than its eastern namesake, the falls are a favorite destination for hiking, picnicking, and photography. Scenic trails like the **Canyon Rim Trail** offer residents a chance to explore the area's natural beauty while staying active.

Twin Falls boasts a lively downtown filled with locally owned shops, restaurants, breweries, and cultural venues. Events such as the **Twin Falls Farmers Market** and seasonal festivals bring

the community together, showcasing the city's welcoming and vibrant atmosphere. Modern conveniences, including shopping centers and excellent healthcare facilities, make Twin Falls a comfortable and accessible place to live.

Housing options in Twin Falls cater to diverse needs, with cozy starter homes, contemporary new builds, and spacious properties that often feature views of the surrounding natural beauty. A relatively low cost of living and safe, family-friendly neighborhoods make the city an attractive choice for individuals and families alike.

Twin Falls is also an economic powerhouse, with a strong presence in **agriculture, healthcare, and education**. Major employers like **Chobani** and **Clif Bar** contribute to its stability and provide ample career opportunities.

Whether you're drawn to its awe-inspiring scenery, active lifestyle, or welcoming community, Twin Falls offers a unique blend of adventure, opportunity, and charm. It's a city where natural wonders and modern living come together, making it an extraordinary place to call home.

WELCOME TO THE GREAT OUTDOORS

Nestled in the heart of the Pacific Northwest, Idaho is a haven for outdoor enthusiasts, offering a diverse range of activities set against a backdrop of stunning natural beauty. From the serene waters of the Boise River, perfect for fishing and kayaking, to the rugged trails of the Sawtooth's, ideal for hiking and mountain biking, the state is a playground for those who seek adventure. Winter brings with it the thrill of skiing and snowboarding in the nearby mountains, while the warmer months offer opportunities for rock climbing, camping, and exploring the region's rich wildlife.

Furry friends love exploring Idaho's trails.



Camping under the stars is always a highlight of the summer in Idaho.



Wildflowers line the trails in the foothills.



Lucky Peak Dam

CAMPING

Idaho's vast and varied landscapes make it a camping haven, where nature enthusiasts can find their perfect spot under the stars. Campers can choose from backcountry adventures, accessible family-friendly campgrounds, and even RV resorts with full amenities. The state's natural beauty is on full display in its camping sites, with options to camp near towering mountain ranges, in dense forests, beside flowing rivers, or in the midst of rolling hills. Idaho's clear skies also provide a magnificent backdrop for stargazing, adding another layer of wonder to the camping experience.

MOUNTAIN BIKING

Idaho is a mountain biking paradise, boasting an extensive network of trails that cater to riders of all abilities and styles. These trails wind through stunning landscapes, from dense forests and rolling hills to rugged mountain peaks, offering not only thrilling rides but also breathtaking views. Idaho's commitment to outdoor recreation means

well-maintained trails and a supportive biking community with events, races, and group rides. Whether seeking a leisurely ride or an adrenaline-fueled adventure, Idaho's trails provide a perfect backdrop for discovering beauty on two wheels.

HIKING

Offering endless trails that cater to every level and interest, which lead through some of the most breathtaking scenery in the Pacific Northwest. Hiking in Idaho means traversing through dense forests, alpine meadows, past cascading waterfalls, and up to summit views that stretch for miles. Idaho's well-maintained trail system and commitment to conservation ensure a pristine hiking experience, allowing adventurers to immerse themselves in the natural beauty and tranquility of the outdoors while experiencing the peace of the wilderness.

HUNTING

A hunter's paradise, offering some of the best game hunting opportunities in the United States.

The state's rugged and scenic landscapes are home to a rich variety of wildlife, including deer, elk, bear, and waterfowl, providing hunters with a challenging and rewarding experience. Idaho's commitment to wildlife management and conservation ensures sustainable hunting practices, with well-regulated seasons and licensing to preserve the natural balance. The state also offers numerous resources, from guided expeditions in the backcountry to educational programs on safety and conservation. Whether you're an experienced hunter or looking to try the sport for the first time, Idaho's outdoor culture, coupled with its abundant wildlife, makes it an ideal destination.

FISHING

Idaho, with its abundant and diverse waterways, is a fisherman's dream, offering some of the finest fishing experiences in the country. From the legendary fly fishing in the Henry's Fork and Silver Creek to the abundant catches in Lake Pend Oreille and the Snake River, the state caters to anglers of all types. Whether you're

after trophy trout, bass, or salmon, Idaho's rivers, lakes, and reservoirs provide the perfect setting for a day of fishing. The state's commitment to fishery management and conservation ensures a sustainable and enriching fishing environment. Besides the thrill of the catch, fishing in Idaho is also about immersing oneself in the tranquil beauty of the outdoors, with picturesque landscapes and wildlife sightings adding to the experience.

BACKPACKING

The diverse and expansive wilderness offers backpacking enthusiasts an unparalleled adventure into some of the most pristine and untouched landscapes in the Pacific Northwest. From the rugged peaks of the Sawtooth Range to the deep gorges of Hells Canyon, Idaho's trails provide a variety of experiences for all skill levels, whether you're seeking a challenging multi-day trek or a more leisurely overnight hike. The state's network of trails meanders through lush forests, alongside crystal-clear mountain lakes, offering stunning vistas and opportunities for wildlife sightings.



BIRD WATCHING

A serene and captivating experience, offering a unique blend of natural beauty and avian diversity. The state's vast wilderness areas and tranquil forests become a haven for a myriad of bird species. The crisp, clear Idaho mornings are filled with the melodic songs of warblers and finches, while the majestic raptors, such as bald eagles and ospreys, soar gracefully against the backdrop of the expansive blue skies. The numerous rivers and lakes provide a perfect habitat for waterfowl and shorebirds, making this a paradise for bird enthusiasts.

ROCK CLIMBING

Boasting a rich rock climbing scene, with its diverse and rugged terrain providing a plethora of options for climbers of all skill levels. The City of Rocks National Reserve, often referred to as the 'Silent City of Rocks,' is renowned worldwide for its high-quality granite and challenging routes, making it a favorite among climbers. Another notable spot is the Sawtooth Range, offering not only traditional rock climbing but also alpine climbing opportunities amidst its stunning peaks and pristine wilderness.

OFF ROADING

Idaho's rugged and varied terrain makes it an ideal destination for off-roading enthusiasts, offering a thrilling way to explore the state's untamed landscapes. From the vast dunes of St. Anthony to the challenging mountain trails of the Boise National Forest, the state is replete with opportunities for all levels of off-road adventurers. These trails take you through scenic vistas of towering mountains, dense forests, and open plains, offering an exhilarating experience and a unique perspective of Idaho's natural beauty. Off-roading in Idaho is not just about conquering challenging terrains; it's



about embracing the spirit of adventure and the freedom to explore remote areas. The state's off-roading community is welcoming, often organizing group rides and events, making it a fantastic way for newcomers to meet fellow enthusiasts and integrate into the local culture. Whether you're behind the wheel of a 4x4, ATV, dirt bike, or razor... Idaho's off-roading trails promise an adventure-filled journey into the great outdoors.

HORSEBACK RIDING

Idaho, with its vast and varied landscapes, offers exceptional opportunities for horseback riding, appealing to both beginners and experienced riders. The state's terrain includes rolling hills, dense forests, and rugged mountains, providing a range of scenic trails that traverse through national forests, state parks, and wilderness areas. Popular destinations for horseback riding include the Sawtooth National Recreation Area, known for its breathtaking views and well-maintained trails, and the City of Rocks National Reserve, offering unique riding experiences amidst striking rock formations and historical trails.



SKIING & SNOWBOARDING

Nestled amidst the rugged grandeur of Idaho's mountains, the state's skiing and snowboarding scene is a symphony of thrilling slopes and pristine wilderness. The majestic peaks of the Sawtooth Range serve as a dramatic backdrop for exhilarating downhill adventures, where skiers carve through trails that weave like ribbons through dense forests and open into panoramic vistas. Snowboarders find their haven in the terrain parks and halfpipes, where they dance with gravity in the snow. As the sun sets, painting the sky in hues of orange and pink, the mountains of Idaho, from Sun Valley's legendary runs to the hidden gems around Boise and beyond, resonate with the joyful echoes of day's adventures, promising endless possibilities for those who dare to ride.

In Idaho, every day is an outdoor adventure! From off-roading, to horseback riding, to snowboarding, there is always something to keep you entertained!





EMBRACE THE THRILL OF **WHITEWATER RAFTING**

Idaho's reputation as a premier destination for whitewater rafting is well-earned, with its numerous rivers offering some of the most exhilarating rafting experiences in the nation. These rivers carve through stunning landscapes, from deep canyons to forested mountainsides. Professional outfitters are available to guide rafters safely down the rapids, ensuring an enjoyable and secure adventure. Rafting trips often include opportunities for camping along riverbanks, fishing, and soaking in hot springs.

WILDERNESS RIVER OUTFITTERS

This family-owned and operated company offers adventure-style rafting trips on the Salmon River. They have received positive reviews for their experienced and professional guides, delicious food, and amazing campsites.

CASCADE RAFT & KAYAK

This company offers whitewater rafting trips on the Payette River near Boise and McCall, Idaho. They are known for their experienced and fun guides, as well as their extra equipment to ensure comfort and warmth on the river.

SAWTOOTH ADVENTURE COMPANY

This company offers whitewater rafting trips on the Salmon River. They have received positive reviews for their accommodating staff, beautiful retail store and fly shop, and plentiful lunches.



RELAX IN OUR **HOT SPRINGS**

TRINITY HOT SPRINGS

Trinity Hot Springs, located near Featherville, Idaho, offers natural, mineral-rich waters in both private and public pools set in a scenic canyon. It's the perfect spot to relax and unwind, with stunning mountain views and a peaceful atmosphere. 2 Hours from Boise

GOLD FORK HOT SPRINGS

Gold Fork Hot Springs, located near Donnelly, Idaho, offers natural, mineral-rich soaking pools surrounded by stunning mountain scenery. With amenities like restrooms, changing rooms, and a snack shop, it's the perfect spot to relax and recharge. 2 hours from Boise

THE SPRINGS

The Springs in Idaho City offers a relaxing escape with natural hot springs nestled in a beautiful mountain setting. Featuring several private soaking pools, an Inn, and poolside snacks and beverages served, it's the perfect place to unwind and enjoy the peaceful surroundings. 50 Minutes from Boise

KIRKHAM HOT SPRINGS

Kirkham Hot Springs, just five miles north of Lowman on Highway 21, is one of Idaho's favorite hot spring spots. With its mix of cozy pools, a warm waterfall that feels like a natural shower, and a lively atmosphere thanks to the nearby campground, it's the perfect place to soak and meet fellow adventurers! 1 hour and 45 minutes from Boise

PINE FLATS HOT SPRINGS

Tucked along the scenic Payette River, Pine Flats Hot Springs offers the perfect mix of relaxation and adventure. With easy access year-round, the cliffside setting and steaming geothermal pools make for an unforgettable soak, while a little extra exploration rewards you with private pools and a hidden hot waterfall! 1 hour and 30 minutes from Boise

MIRACLE HOT SPRINGS

Miracle Hot Springs, near Buhl, Idaho, offers a relaxing escape with private soaking pools and stunning views of the Snake River Canyon. With options for overnight stays in cabins or campsites, it's the perfect spot to unwind and enjoy both natural beauty and tranquility. 1 hour and 40 minutes from Boise

BURGDORF HOT SPRINGS

Burgdorf Hot Springs, nestled in the Payette National Forest, offers a serene retreat steeped in Idaho's natural beauty and history. Open year-round, this rustic destination features natural hot pools, historic cabins, and breathtaking wilderness. During the winter months (December–April), it's accessible only by snowmobile, adding an adventurous touch to your visit. In summer (June–October), you can easily reach it by car via Warren Wagon Road. Just 30 miles north of McCall and about 3 hours from Boise, it's perfect for soaking under the stars or relaxing after exploring nearby trails.



Beautiful fall trails near Boise.

EXPLORE OUR TRAILS

Boise offers a diverse range of trails that cater to all types of outdoor enthusiasts. From easy, family-friendly loops to challenging backcountry routes, there's something for everyone. Hikers can enjoy scenic vistas, riverside paths, and dense forests, while mountain bikers and horseback riders have access to rugged terrain and thrilling singletracks. Birdwatchers will find plenty of quiet spots to observe local wildlife, and those seeking solitude can escape to more remote areas. Whether you're looking for a leisurely stroll or a strenuous adventure, Boise's trail network provides endless opportunities to explore the natural beauty of the region.

According to AllTrails.com here are the Best 10 trails in the Boise area



Boise River Greenbelt Trail

TABLE ROCK TRAIL

This 3.9-mile loop trail offers a rewarding adventure with an elevation gain of 882 feet, leading you to the summit of Table Rock and a striking cross monument. Along the way, you'll pass through a historic quarry site and enjoy panoramic views of the Boise skyline from the top. The route meanders through open meadows and sagebrush, providing no shade, so it's important to prepare for the heat, especially if hiking in the warmer months.

FREDDY'S STACK ROCK TRAIL

This 11.6-mile loop trail, with an elevation gain of 1,335 feet, offers a challenging hike near Boise, typically taking around 4 hours and 42 minutes to complete. The route is a favorite for birdwatching, hiking, and horseback riding, so expect to share the path with other outdoor enthusiasts. The ideal time to visit is between April and October. Dogs are allowed but must be kept on a leash.

While many trails are accessible year-round, some higher elevation trails may be snow-covered in winter months. It's advisable to check trail conditions before heading out, especially during spring runoff or after heavy rains.

CERVIDAE PEAK

Cervidae Peak, located 17 miles from Boise, offers a steep scramble in summer and a snow climb in winter. The 4.4-mile out-and-back route gains 1,883 feet in elevation. Starting past Spring Shores Marina, you'll climb a steep hillside to join the main ridge, then continue northwest for 2 miles to the summit. From the top, enjoy sweeping views of Shafer Butte, Thorn Creek Butte, Mt. Heinan, Sunset Peak, and Pilot Peak. The ridge also offers opportunities for longer hikes, with antlers and weather balloons sometimes found along the way.

HULLS GULCH INTERPRETIVE TRAIL

Hike this 6.5-mile out-and-back trail near Boise with a moderate challenge and an elevation gain of 1,138 feet. It typically takes about 3 hours to complete. Popular from March to November, expect to meet other hikers along the way. Dogs are welcome, with some areas allowing off-leash exploration. The trail offers stunning views of Boise, passing a seasonal creek, small waterfalls (after rain), and lush vegetation with towering pines. It begins on a hillside, leading into a beautiful gulch with steep drop-offs.

RED CLIFFS NATURE CENTER TRAIL

Tackle this 3.1-mile loop trail that features an elevation gain of 482 feet. The hike begins with a steady climb up the Red Cliffs trail, offering beautiful views from the top without being overly strenuous. Once you reach the summit, the remainder of the loop is mostly level or downhill, providing a more relaxed descent. With its manageable incline and steady pace, this route offers a great workout while still allowing you to enjoy the scenery.

KEPROS MOUNTAIN TRAIL

Embark on this 9.4-mile out-and-back trail near Boise, which features a challenging route with an elevation gain of 1,978 feet. On average, it takes about 4 hours and 46 minutes to complete. This trail is popular for birdwatching, hiking, and running, but you can still find moments of peace if you visit during quieter times. The optimal months to explore are between April and June. Dogs are welcome on the trail, but they must remain on a leash.



CAMELS BACK TRAIL LOOP

Enjoy this 1.7-mile loop trail in Hulls Gulch Reserve, which offers a moderate elevation gain of 324 feet. The hike takes you to a stunning summit where you'll be rewarded with breathtaking views of Boise and the Treasure Valley. The trail includes soft, sandy paths and some steeper sections, so be sure to wear sturdy footwear to avoid slipping. While parking at the trailhead is limited, additional parking is available just a short walk away at Camels Back Park.

POLECAT LOOP TRAIL

Discover this 6.1-mile loop trail near Boise, offering a moderately challenging route with an elevation gain of 748 feet. It typically takes around 2 hours and 31 minutes to complete. As a popular destination for hiking, horseback riding, and mountain biking, you're likely to encounter fellow outdoor enthusiasts along the way. The trail is open year-round, providing scenic views in every season. Dogs are welcome but must remain on a leash throughout the hike.

CAMELS BACK HULLS GULCH LOOP

Explore this 3.9-mile loop trail near Boise, which offers an easy route with an elevation gain of 465 feet. It typically takes around 1 hour and 36 minutes to complete. This trail is popular for birdwatching, hiking, and mountain biking, yet you can still find moments of peace during less busy times. Open year-round, it offers scenic beauty no matter the season. Dogs are welcome, but must be kept on a leash.



DISCOVER IDAHO'S PARKS

Idaho is home to a breathtaking array of parks, offering endless opportunities for outdoor adventure, relaxation, and connection with nature. From serene city green spaces perfect for picnics and family outings to vast state parks with trails, waterways, and campgrounds, there's something for everyone to enjoy. Whether you're seeking a tranquil spot to unwind or an exciting place to explore, Idaho's parks are sure to inspire and delight.

THE BOISE RIVER GREENBELT

The Boise River Greenbelt is a cherished feature of the Treasure Valley, spanning over 25 miles and connecting parks, neighborhoods, and businesses along the Boise River. This managed pathway runs from the Lucky Peak area all the way to Eagle, providing a continuous and lush corridor through the heart of the city. It offers residents and visitors a peaceful escape from urban life. Popular activities on the Greenbelt include walking, running, cycling, and birdwatching, as well as access to fishing spots and riverside picnicking areas. During the summer, the Greenbelt also serves as a key route for those floating the Boise River.

Access points to the Greenbelt are plentiful throughout the Boise, Garden City, and Eagle areas. This ensures that everyone in the community can enjoy this incredible resource. Major access points include Ann Morrison Park, Julia Davis Park, Barber Park, Veterans Memorial Park, Esther Simplot Park, Riverside Park, Sandy Point Beach near Lucky Peak, and Eagle Island State Park. Many trailheads are equipped with parking, restrooms, and amenities, making it convenient for families and outdoor enthusiasts to spend a day exploring.

What makes the Greenbelt so special is its role as both a recreational haven and a transportation corridor that seamlessly integrates nature into daily life. It's not only a place to exercise or relax but also a hub for connecting Boise's vibrant neighborhoods and parks. For newcomers, the Boise River Greenbelt offers an unparalleled introduction to the area's commitment to sustainability, outdoor living, and community well-being.

NORTH END CAMEL'S BACK PARK

Nestled in historic Hyde Park, this park features scenic city views, hiking trails, an outdoor gym, playgrounds, and sports courts.

ELM GROVE PARK

A 3-acre neighborhood space featuring open play areas, a playground, restrooms, tennis and basketball courts, and a softball field.

NORTHEAST BOISE KRISTIN ARMSTRONG MUNICIPAL PARK

This 28-acre riverside park features shady picnic areas, playgrounds, bocce courts, open spaces, and easy Greenbelt access.

MARIANNE WILLIAMS PARK

Enjoy a serene 72-acre park with scenic river views, picnic shelters, open fields, playgrounds, and Greenbelt access for outdoor enjoyment.

SOUTHEAST BOISE BAGGLEY PARK

This neighborhood park offers tennis and basketball courts, a sand volleyball court, playground, open play areas, and Greenbelt access.

IVYWILD PARK

This 18-acre park features an outdoor pool with slides, tennis courts, playground, sports fields, open areas, and reservable picnic shelters.

BOISE BENCH ANN MORRISON PARK

This 153-acre park features Greenbelt access, a fountain, sports fields, a disc golf course, and hosts beloved annual events.

KATHRYN ALBERTSON PARK

This 41-acre park features serene walking paths, scenic ponds, abundant wildlife, Greenbelt access, and reservable outdoor gazebos.



Boise Whitewater Park

DOWNTOWN BOISE JULIA DAVIS PARK

Established in 1907, this historic park offers Greenbelt access, sports courts, a rose garden, playgrounds, a zoo, and museums.

NORTHWEST BOISE CATALPA PARK

This 6.5-acre neighborhood park features a walking path, playground, tennis and basketball courts, sand volleyball, horseshoe pits, and an informal skateboard area.

WILLOW LANE PARK

This 3-acre neighborhood space offers a basketball court, pickleball courts, a playground, and close to the nearby athletic complex.

WEST BOISE JULLION PARK

This 11-acre neighborhood park features a playground, non-reservable picnic shelter, and open play areas, located next to Summerwind Elementary.

MOUNTAIN VIEW PARK

This 8-acre neighborhood park features picnic tables, a playground, tennis and basketball courts, and open play areas.

SOUTH BOISE MOLENAAR PARK

This 20-acre park features a playground, splash pad, skate park, off-leash dog area, pond, sports fields, and walking paths.

PEPPERMINT PARK

This 7-acre neighborhood park, adjacent to Pepper Ridge Elementary, features a playground, basketball and pickleball courts, and open play areas.

GARDEN CITY BOISE WHITEWATER PARK

This innovative park features a dynamic wave system for kayaking, surfing, and paddleboarding, with riverfront access and viewing areas.

RIVER POINTE PARK

Tucked away, this park features shaded seating, picnic areas, and convenient Greenbelt access, offering a relaxing community feel.

MERIDIAN JULIUS M. KLEINER MEMORIAL PARK

This expansive 60-acre space features a pond, walking paths, playgrounds, sports fields, picnic shelters, and an amphitheater.

SETTLERS PARK

This vibrant 57-acre space offers playgrounds, a splash pad, sports fields, picnic shelters, and hosts popular community events.



Julius M. Kleiner Memorial Park

EAGLE EAGLE ISLAND STATE PARK

This sprawling 545-acre park offers swimming, hiking, equestrian trails, a disc golf course, picnic areas, and winter tubing.

STEPHEN C. GUERBER PARK

This 15-acre community space features a splash pad, playground, sports fields, picnic shelters, and scenic walking paths.

KUNA BERNIE FISHER PARK

This central community space offers a playground, picnic areas, walking paths, and hosts local events, creating a lively gathering spot.

DISCOVERY PARK

This expansive park offers hiking trails, picnic areas, open fields, and plenty of space for outdoor recreation and activities.

NAMPA LAKEVIEW PARK

This 44-acre park features a swimming pool, amphitheater, sports fields, playground, rose garden, duck pond, and historic displays.

MIDWAY PARK

This 52-acre park features baseball/softball fields, pickleball courts, a splash pad, playground, fitness trail, and picnic shelters.

Boise boasts an average of 206 sunny days per year, offering plenty of opportunities to get outside and enjoy Idaho's incredible natural beauty and outdoor adventures!

CALDWELL BROTHER'S PARK

This 35-acre sports complex features eleven soccer fields, walking paths, playground equipment, and drinking fountains. Please note, pets are not allowed at this facility.

MALLARD PARK

This 30-acre park offers Lake Lowell views, an accessible playground, six picnic shelters, an amphitheater, walking paths, and an 18-hole disc golf course.

MIDDLETON MIDDLETON PLACE PARK

This 7-acre park features restrooms, a playground, walking path, tennis courts, large and small shelters, baseball field, sand volleyball, and a tumbling/sledding hill.

PICADILLY PARK

This 3.9-acre park features a skate park, splash pad, playground, zip line, amphitheater, walking paths, and picnic shelters.

STAR BLAKE HAVEN PARK

This 4-acre park features a playground, swings, horseshoe pits, open spaces, a gazebo, and a reservable shade structure.

HUNTER'S CREEK SPORTS PARK

This 18-acre complex features baseball and football fields, open green areas, the Tom Erlebach Skatepark, and picnic spots.

EMMETT BLACK CANYON PARK

This 12-acre park offers a beach, swimming area, boat launch, picnic tables, group gazebos, and a horseshoe pit.

EMMETT CITY PARK

This centrally located park features shaded areas, open lawns, picnic shelters, a playground, tennis courts, and hosts community events.

ADVENTURE TO MOUNTAIN TOWNS

Serene water adventures await on Idaho's stunning mountain lakes!

IDAHO CITY (40 MILES TO BOISE)

Idaho City, a hidden gem in the Boise County mountains, stands as a living relic of the American West, once a bustling center during the 19th-century gold rush. Today, this charming town lures visitors with its well-preserved historic buildings, museum, and a genuine old-western feel, offering a glimpse into Idaho's rich mining history. Beyond its historical allure, Idaho City is a gateway to outdoor activities like hiking and camping in the surrounding Boise National Forest, making it an ideal destination for history buffs, nature lovers, and hot springs enthusiasts.

GARDEN VALLEY (52 MILES TO BOISE)

Garden Valley is a picturesque mountain valley, nestled along the banks of the scenic Payette River. Known for its stunning natural beauty and outdoor recreation opportunities. This idyllic community, surrounded by towering pine forests and rolling hills, is a paradise for nature enthusiasts, offering activities like whitewater rafting, hiking, and hot springs exploration. Garden Valley's small-town charm, combined with its vibrant arts scene and community events, make it a delightful retreat for those seeking a peaceful yet engaging connection with Idaho's majestic wilderness.

CASCADE (78 MILES TO BOISE)

Cascade is a charming small town located in Valley County, renowned for its stunning natural scenery and outdoor recreational opportunities. It serves as a gateway to the Frank Church-River of No Return Wilderness Area, offering access to activities like hiking, backpacking, fishing, and whitewater rafting. Additionally, Cascade is famous for Lake Cascade State Park, which draws visitors year-round for its excellent fishing, boating, camping, and winter sports activities. If you're looking for a serene and picturesque experience, surrounded by majestic mountains, look no further!

DONNELLY (94 MILES TO BOISE)

Donnelly is a serene town nestled in the Long Valley of Valley County. Known for its stunning natural landscapes and proximity to Lake Cascade & Tamarack Resort. This small town becomes a hub of activity in winter with skiing and snowboarding at the nearby resort and transforms into a summer paradise with boating, fishing, and hiking opportunities in the surrounding mountains and lake areas. The rustic charm, combined with its array of outdoor activities and community events like the annual Huckleberry Festival, makes it a captivating destination for those seeking both relaxation and adventure.

MCCALL (109 MILES TO BOISE)

McCall is nestled in the heart of the Payette National Forest. It's a picturesque mountain town famed for its stunning natural beauty and outdoor adventures. The town is a year-round haven for nature enthusiasts, offering everything from skiing & snowboarding in the snowy winters at Brundage Mountain to boating and fishing on the serene Payette Lake in the summer. Rich in local charm and hospitality, McCall also captivates visitors with its vibrant community events, like the renowned Winter Carnival, showcasing intricate ice sculptures and a lively celebration of the season.

STANLEY (133 MILES TO BOISE)

Stanley is a captivating mountain town nestled in the heart of the Sawtooth National Recreation Area, famed for its breathtaking alpine scenery and crystal-clear lakes. This idyllic spot is a mecca for outdoor enthusiasts, offering unparalleled opportunities for hiking, rafting, fishing, and camping amidst the rugged beauty of the Sawtooth Mountains. Stanley's small-town charm, combined with its stunning natural backdrop and a plethora of outdoor activities, makes it an enchanting retreat for those seeking a serene yet adventurous escape in one of Idaho's most pristine landscapes.

SUN VALLEY (155 MILES TO BOISE)

Nestled in Idaho's majestic mountains, Sun Valley beckons with its blend of natural beauty and upscale charm. Renowned for its world-class skiing, the area transforms into a winter wonderland, offering pristine slopes and panoramic mountain views. In the warmer months, it's a haven for hiking, mountain biking, and golf, with trails weaving through scenic landscapes. The village itself exudes an air of luxury, dotted with fine dining, quaint boutiques, and art galleries. Sun Valley seamlessly marries outdoor adventure with refined culture, making it an idyllic destination for both nature lovers and those seeking a touch of elegance.

COEUR D'ALENE (378 MILES TO BOISE)

Situated along the shimmering shores of Lake Coeur d'Alene, this Idaho treasure blends stunning natural beauty with a lively, welcoming atmosphere. Known for its pristine waters and abundant outdoor activities, Coeur d'Alene is a destination for all seasons. Summer days are filled with boating, paddleboarding, and fishing, while scenic trails invite hikers and cyclists to explore the area. In winter, the region transforms into a peaceful retreat, ideal for cozy fireside moments and nearby skiing excursions. Downtown Coeur d'Alene offers a charming mix of waterfront dining, boutique shopping, and cultural experiences. With its perfect harmony of outdoor adventure and refined living, Coeur d'Alene is a haven for both thrill-seekers and those seeking tranquility.

ICONIC SKI RESORTS

Idaho's ski resorts are a true marvel, offering thrilling experiences for winter sports enthusiasts of all levels. From the pristine powder of Sun Valley to the scenic slopes of Tamarack Resort, these destinations are among the finest in the Pacific Northwest. But the allure of Idaho's mountains doesn't end with the winter season. As the snow melts, these resorts evolve into vibrant playgrounds for summer adventures. Hikers and mountain bikers take to lush trails, while nearby rivers and lakes beckon anglers, kayakers, and rafters.

Each resort brings its own unique charm—from the affordable family fun at Bogus Basin to the luxurious amenities of Sun Valley. Whether you're carving through snow or exploring sun-soaked trails, Idaho's ski resorts deliver year-round opportunities for unforgettable adventures. Embrace the beauty of these dynamic landscapes and discover why Idaho is a paradise for outdoor enthusiasts.

BOGUS BASIN: 16 MILES TO BOISE

Bogus Basin Ski Resort Just a short drive from Boise, Bogus Basin Ski Resort is a non-profit destination offering over 2,600 acres of skiable terrain, including night skiing and a tubing hill. Known for its affordability, the resort welcomes skiers and snowboarders of all skill levels. Beyond winter, Bogus Basin transforms into a hub for mountain biking, hiking, and events like concerts and yoga sessions, providing breathtaking views and a cool retreat in warmer months.

TAMARACK: 102 MILES TO BOISE

Tamarack Resort Tamarack Resort combines stunning scenery with diverse activities, making it a year-round haven. Winter visitors enjoy skiing, snowboarding, snowshoeing, and cross-country trails. When the snow melts, the resort offers mountain biking, hiking, zip-lining, and watersports on nearby Lake Cascade. Outdoor concerts and events add to its charm, while Osprey Meadows invites golfers to play with an unbeatable mountain backdrop.



Idaho's ski resorts typically operate from late November through mid-April, but the exact season length depends on annual snowfall and weather conditions. Early season skiing may feature limited terrain as resorts build up their snow base, while late-season conditions can vary, with slushy snow common on warm spring days.



Winter and Summer in Sun Valley

SOLDIER MOUNTAIN: 112 MILES TO BOISE

Soldier Mountain Tucked in the Sawtooth National Forest, Soldier Mountain provides an intimate, family-friendly skiing experience with 2,000 acres of terrain. Known for its exceptional backcountry skiing and diverse trails, the resort caters to all skill levels. During summer, Soldier Mountain offers hiking and mountain biking opportunities, making it a serene escape for year-round adventure.

BRUNDAGE: 117 MILES TO BOISE

Brundage Mountain Resort Near McCall, Brundage Mountain is celebrated for its powder skiing and varied terrain across 1,500 acres. The resort's well-maintained runs, backcountry access, and panoramic views attract skiers and snowboarders alike. Winter fun extends to snowmobile tours and tubing at McCall's Activity Barn. Summer activities, including mountain biking and hiking, make Brundage a must-visit for outdoor lovers.

SUN VALLEY: 154 MILES TO BOISE

Sun Valley Resort Sun Valley Resort is Idaho's crown jewel, renowned for its luxurious amenities and breathtaking scenery. Winter offerings include world-class skiing, Nordic trails, and snowboarding, paired with a vibrant après-ski scene. In summer, Sun Valley features golf courses, hiking and biking trails, and cultural events. Don't miss Sun Valley on Ice, showcasing medal-winning skaters and a dazzling ice cast, a highlight of this iconic destination.

TOPGOLF MERIDIAN

Located in the heart of Meridian, Topgolf offers a modern twist on the traditional driving range experience. This high-tech entertainment venue combines golfing fun with interactive games, delicious food, and a lively atmosphere. Players of all skill levels can enjoy hitting microchipped golf balls that track accuracy and distance, competing in a variety of engaging challenges. With climate-controlled hitting bays, a rooftop terrace, and a full-service restaurant and bar, Topgolf is perfect for everything from casual outings to special events. Whether you're practicing your swing or simply enjoying a night out, Topgolf Meridian delivers fun for everyone.

ENDLESS GOLF COURSES

The Treasure Valley is a golfer's paradise, offering a mix of scenic landscapes, challenging courses, and luxurious amenities. Idaho's typically dry and sunny climate allows for an extended golf season, inviting players to tee off amidst the region's natural beauty and tranquility. Many of these courses are situated in or near high-end neighborhoods, providing an unparalleled lifestyle for golf enthusiasts. Here are some of the top golf courses in the region:

BOISE

Crane Creek Country Club: Nestled in the Boise Foothills, this private club offers stunning views and an expertly designed course. It's located near some of the city's most exclusive neighborhoods.

Warm Springs Golf Course: A public course featuring tree-lined fairways and a serene setting along the Boise River.

GARDEN CITY

The River Club: One of the oldest clubs in the region, this semi-private course combines history with a beautifully maintained layout, surrounded by upscale residential communities.

MERIDIAN

Lakeview Golf Club: A well-loved public course offering a relaxed atmosphere and challenging play for golfers of all levels.

The Club at SpurWing: This private club boasts an immaculate course, high-end amenities, and is part of a luxurious residential community.

EAGLE

Banbury Golf Course: A premier public course known for its championship layout and picturesque water features, it's located within the affluent Banbury Meadows neighborhood.

Eagle Hills Golf Course: A family-friendly public course with a welcoming atmosphere and well-maintained greens.

KUNA

Falcon Crest Golf Club: Offering 27 holes of championship golf, Falcon Crest is a favorite among locals and is near developing neighborhoods with expansive views.

NAMPA

Ridgecrest Golf Club: This municipal course features both an 18-hole championship course and a 9-hole executive course, catering to all skill levels.

Centennial Golf Course: A scenic public course with rolling fairways and views of the Owyhee Mountains.

CALDWELL

Purple Sage Golf Course: A public course offering a relaxed setting with well-maintained greens and fairways.

Fairview Golf Course: A smaller, more casual course perfect for beginners and families.

MIDDLETON

River Birch Golf Course: Known for its challenging layout and peaceful setting, this public course offers a great golfing experience for players of all skill levels.

STAR

River Birch Golf Course (adjacent): Serving both Middleton and Star, this course is a local gem with scenic views and a welcoming environment.



FROM SPRING TO WINTER EVENTS FOR EVERY SEASON

The Treasure Valley thrives on year-round adventure, offering a vibrant calendar of events to enjoy in every season. From lively spring festivals and summer concerts under the stars to colorful fall harvest celebrations and magical winter holiday markets, there's always something happening to bring communities together. Whether you're seeking family-friendly fun, cultural experiences, or outdoor excitement, Idaho's events showcase the state's unique charm and boundless spirit no matter the time of year.

SPRING:

RACE TO ROBIE CREEK

The Race to Robie Creek is a challenging and iconic half-marathon in the Boise Foothills, known as one of the toughest races in the Northwest. Celebrated for its steep climbs, scenic views, and festive post-race party, it's a cherished tradition for locals and adventurous runners alike.

TREEFORT

Treefort Music Fest is a multi-day festival in downtown Boise, showcasing diverse music, art, and culture. With hundreds of performances and activities spread across various "forts," it's a vibrant celebration that highlights Boise's creative and inclusive community.

KUNA HOMETOWN FAIR

The Kuna Hometown Fair is a cherished community event celebrating small-town charm with live entertainment, local vendors, carnival rides, and a parade. It's a fun-filled weekend that brings residents and visitors together to enjoy Kuna's welcoming spirit.

FIREBIRD RACEWAY

Firebird Raceway, located near Eagle, is a premier drag racing venue offering high-speed excitement for motorsport enthusiasts. Hosting events ranging from local races to national competitions, it's a hub for adrenaline-fueled entertainment in the Treasure Valley.



Treefort: Boise's ultimate celebration of music, art, and culture!



Endless inspiration for home and garden enthusiasts awaits!



Idaho offers diverse racing styles and thrilling events!

MERIDIAN SPEEDWAY

Meridian Speedway is a popular short-track racing venue in Meridian, offering thrilling stock car races and family-friendly entertainment. With its high-energy events and community-focused atmosphere, it's a favorite destination for motorsport fans in the Treasure Valley.

BOISE ROADSTER SHOW

The Boise Roadster Show is an annual event showcasing custom cars, hot rods, and classic vehicles at the Idaho Expo. A must-see for car enthusiasts, it features stunning displays, competitions, and a celebration of automotive craftsmanship.

BOISE SPRING HOME & GARDEN SHOW

The Boise Spring Home & Garden Show is a premier event that brings together home improvement, landscaping, and gardening experts at Expo Idaho. Perfect for homeowners and DIY enthusiasts, it features innovative products, ideas, and inspiration for creating your dream home and garden.

IDAHO SPORTSMAN SHOW

The Idaho Sportsman Show is a yearly event in Boise that celebrates outdoor recreation, featuring exhibitors specializing in hunting, fishing, camping, and more. It's a must-visit for outdoor enthusiasts, offering gear, seminars, and inspiration for adventures in Idaho's great outdoors.

BOISE FLOWER & GARDEN SHOW

The Boise Flower & Garden Show is an annual springtime event at the Boise Centre, showcasing vibrant floral displays, gardening products, and expert advice. It's a perfect destination for gardening enthusiasts and anyone looking to bring beauty and inspiration to their outdoor spaces.

BOISE MUSIC WEEK

Boise Music Week, held every May at various venues across the city, is a community celebration of music and performing arts. Featuring free performances from local talent and professional artists, it offers everything from musicals to jazz, highlighting Boise's rich cultural scene.



Idaho Shakespeare Festival is a beloved outdoor theater experience with world-class performances!

SUMMER: IDAHO SHAKESPEARE FESTIVAL

The Idaho Shakespeare Festival is a beloved outdoor theater experience in Boise, offering world-class performances of Shakespearean classics and contemporary plays. Set along the scenic Boise River, it combines culture and nature, making it a unique and cherished community tradition.

TWILIGHT CRITERIUM

The Twilight Criterium is a high-energy cycling race held annually in downtown Boise, drawing elite athletes and enthusiastic crowds. This family-friendly event features thrilling races, food vendors, and a festive atmosphere that highlights the city's vibrant community spirit.

ALIVE AFTER FIVE

Alive After Five, held every Wednesday evening from June through August in downtown Boise's Grove Plaza, is a free summer concert series featuring live music, food vendors, and a lively atmosphere. It's a beloved tradition for locals to gather, enjoy great music, and celebrate Boise's vibrant downtown.

EMMETT CHERRY FESTIVAL

The Emmett Cherry Festival, held every June in Emmett, is a family-friendly celebration of the local cherry harvest. Featuring parades, carnival rides, live entertainment, and delicious cherry-themed treats, it's a cherished tradition that draws visitors from across the Treasure Valley.

WESTERN IDAHO FAIR

The Western Idaho Fair, held every August at Expo Idaho in Garden City, is a lively event featuring carnival rides, agricultural exhibits, live entertainment, and a variety of food vendors. It's a summertime tradition that blends family fun with Idaho's rich agricultural heritage.



The Spirit of Boise Balloon Classic is fun for the whole family!

CANYON COUNTY FAIR

The Canyon County Fair, held every July in Caldwell, is a vibrant community event featuring carnival rides, 4-H exhibits, live music, and delicious fair food. It's a celebration of local culture and traditions, offering fun for all ages.

SUMMER CONCERT SERIES AT THE CHATEAU DES FLEURS

The Summer Concert Series at The Chateau des Fleurs, held in Eagle, runs from June through August, offering an elegant outdoor music experience. Set in beautiful gardens, it features live performances paired with fine dining options, creating a perfect evening of entertainment and relaxation.

SPIRIT OF BOISE BALLOON CLASSIC

The Spirit of Boise Balloon Classic, held every late August at Ann Morrison Park in Boise, is a stunning hot air balloon festival that fills the skies with vibrant colors. This family-friendly event includes morning launches, evening glows, kid's day, and a magical atmosphere celebrating Boise's community spirit.

KUNA DAYS

Kuna Days, held every August in Kuna, is a lively community celebration featuring a parade, live music, vendors, a car show, and



Experience elite cycling at Twilight Criterium in Downtown Boise.

RODEOS

PBR

April | Ford Idaho Center

EAGLE RODEO

June | Eagle, ID

TREASURE VALLEY PRCA RODEO

June | Meridian, ID

SNAKE RIVER STAMPEDE

July | Ford Idaho Center

CALDWELL NIGHT RODEO

August | D&B Supply Arena

KUNA STAMPEDE

August | Crooked 8

a spectacular fireworks display. It's a fun-filled weekend that highlights the charm and togetherness of small-town living.

BOISE MUSIC FESTIVAL

The Boise Music Festival, held every June at Expo Idaho in Garden City, is a day-long event featuring top national artists, local bands, food vendors, and family-friendly activities. It's a high-energy celebration of music that brings the Treasure Valley community together.

SAN INAZIO BASQUE FESTIVAL

The San Inazio Basque Festival, held every July in downtown Boise's Basque Block, is a vibrant celebration of Basque culture and heritage. Featuring traditional music, dancing, food, and games, it's a lively event that highlights Boise's rich Basque roots.

GOWEN THUNDER AIR SHOW

The Gowen Thunder Air Show, held periodically at Gowen Field in Boise, is a thrilling event showcasing impressive aerial performances by military and civilian aircraft. Featuring jaw-dropping stunts, static displays, and family-friendly activities, it's a must-see celebration of aviation and community pride.

BOISE SOUL FOOD FESTIVAL

The Boise Soul Food Festival, held every August at Julia Davis Park, is a celebration of African-American culture, food, and music. Featuring delicious soul food, live entertainment, and community activities, it's a vibrant event that honors tradition and brings people together.

MERIDIAN DAIRY DAYS

Meridian Dairy Days, held every June in Meridian, is a cherished tradition celebrating the city's agricultural heritage. Featuring a parade, carnival rides, live music, and delicious dairy-themed treats, it's a fun-filled event for the whole family.

TOUR DE FORCE (SUN VALLEY)

Tour de Force, held every July in Sun Valley, is a high-octane event showcasing exotic cars and thrilling high-speed runs. Paired with community events, auctions, and scenic drives, it's a unique celebration of luxury automobiles and philanthropy.

THE BOISE OPEN

The Boise Open, held every August at Hillcrest Country Club, is a premier PGA Korn Ferry Tour event showcasing top-tier golf talent. Featuring competitive play, live concerts, and a vibrant atmosphere, it's a highlight of Boise's summer sports and entertainment scene.



Spooky charm and sweet treats on historic Harrison Blvd!

PUMPKIN PATCHES

JORDAN'S GARDEN CENTER
Boise

PUMPKIN PALOOZA
Meridian

LOWE FAMILY FARMSTEAD
Kuna

SHINDIG FARMS
Nampa

LOVELY HOLLOW FARM
Caldwell



Celebrate winter magic with festive events and holiday cheer!

FALL: ART IN THE PARK

Art in the Park, held every September at Julia Davis Park in Boise, is a premier outdoor arts festival featuring hundreds of artists, live music, food vendors, and family activities. Hosted by the Boise Art Museum, it's a vibrant celebration of creativity and community.

TRICK OR TREAT ON HARRISON BLVD

Trick or Treat on Harrison Blvd, held every Halloween in Boise's historic North End, is a beloved tradition where families enjoy festive decorations, costumes, and candy along the iconic street. Known for its spooky charm, it's a magical evening for all ages.

NIGHT OF A THOUSAND PUMPKINS

Night of a Thousand Pumpkins in Eagle, Idaho, is a festive annual event featuring beautifully carved and glowing pumpkins, live entertainment, and family-friendly activities. Held in downtown Eagle, this community celebration brings autumn to life with creative displays, food vendors, and a magical fall atmosphere.

HYDE PARK STREET FAIR

The Hyde Park Street Fair, held every September in Boise's historic Hyde Park neighborhood, is a vibrant community festival featuring local artisans, live music, food vendors, and family-friendly activities. It's a beloved event that celebrates Boise's eclectic culture and neighborhood charm.

OLD BOISE OKTOBERFEST

Old Boise Oktoberfest, held every September in downtown Boise, is a festive celebration of German culture featuring traditional beer, bratwurst, live music, and games. Set in the historic Old Boise area, it's a lively event that brings the community together for fun and merriment.

WITCHES NIGHT OUT

Witches Night Out at The Village in Meridian, held every October, is a spirited event where participants dress in witchy attire to enjoy shopping, dining, live entertainment, and special activities all while fundraising for local charities. It's a fun-filled evening perfect for celebrating Halloween with friends and family.

BOO AT THE ZOO

Boo at the Zoo, held every October at Zoo Boise in Julia Davis Park, is a family-friendly Halloween event featuring trick-or-treating, festive decorations, and animal encounters. It's a spooktacular way to celebrate the season while supporting wildlife conservation.

DOGTOBER FEST

Dogtober Fest, held every October in downtown Boise, is a lively event celebrating dogs and their owners with a pet costume contest, local vendors, food, and craft beer. Proceeds often support animal welfare organizations, making it a fun and charitable fall outing.

WINTER: IDAHO POTATO DROP

The Idaho Potato Drop, held every New Year's Eve in downtown Boise, is a unique celebration featuring the iconic drop of a giant glowing potato at midnight. Complete with live music, food vendors, and fireworks, it's a festive event that rings in the new year with Idaho pride.

DOWNTOWN BOISE CARRIAGE RIDES

Downtown Boise Carriage Rides, offered during the holiday season, provide a charming way to experience the festive lights and decorations of the city. These horse-drawn rides create a magical, nostalgic atmosphere perfect for families and couples alike.

MCCALL WINTER CARNIVAL

The McCall Winter Carnival, held every late January to early February in McCall, is a beloved celebration of winter featuring stunning snow sculptures, parades, live music, and family-friendly activities. This iconic event showcases McCall's mountain charm and festive spirit.

POLAR BEAR PLUNGE

The Polar Bear Plunge, held every New Year's Day at Lucky Peak Reservoir near Boise, is a daring tradition where participants brave the icy waters to kick off the year with a splash. This invigorating event draws adventurous locals and spectators alike.

THE NUTCRACKER

The Nutcracker, performed annually in December by Ballet Idaho at the Morrison Center in Boise, is a cherished holiday tradition. Featuring stunning choreography, live orchestral music, and enchanting sets, it's a magical experience for audiences of all ages.

FESTIVAL OF TREES

The Festival of Trees, held every Thanksgiving week at the Boise Centre, is a cherished holiday event featuring beautifully decorated Christmas trees, live entertainment, and family-friendly activities. Proceeds benefit local healthcare initiatives, making it a festive celebration with a meaningful cause.

EAGLE COUNTRY CHRISTMAS

Eagle Country Christmas, held every December in downtown Eagle, is a festive celebration featuring a tree lighting ceremony, live music, carriage rides, and holiday treats. This family-friendly event brings the community together to kick off the holiday season in a charming small-town atmosphere.

BOISE CHRISTMAS SHOW

The Boise Christmas Show, held every December at Expo Idaho, is a festive marketplace featuring unique gifts, handmade crafts, holiday décor, and local vendors. It's the perfect event to find one-of-a-kind presents and get into the holiday spirit.

WINTER WONDERLAND

Scentsy Commons shines with over 900,000 lights of holiday joy!

The Treasure Valley transforms into a winter wonderland during the holiday season, offering numerous attractions to immerse yourself in festive cheer. From dazzling light displays to ice skating under the stars, these celebrations are designed to lift your spirits and create memorable moments for all.

Winter Garden aGlow Experience the Idaho Botanical Garden illuminated with over 850,000 twinkling lights, transforming it into a magical holiday retreat. Wander through themed displays, including glowing flowers, trees, and whimsical creatures. Families can enjoy hot cocoa and warm beverages while children marvel at the lights. This cherished annual event also features visits from Santa, ensuring a festive experience for all.

Indian Creek Plaza's Winter Wonderland: Downtown Caldwell becomes a sparkling holiday destination with more than a million lights adorning Indian Creek Plaza. The creek is lined with brilliant light tunnels, reindeer displays, and glowing trees, making it a breathtaking sight. Guests can enjoy Idaho's only ice skating ribbon, where skaters glide under dazzling lights. The plaza hosts holiday events throughout the season, adding to the festive atmosphere.

Scentsy Commons Lights Display in Meridian shines bright with over 900,000 holiday lights meticulously arranged across the sprawling campus. The display includes an enormous decorated Christmas tree and thousands of string lights draping the buildings and walkways. Perfect for an evening stroll, Scentsy Commons offers a serene and joyful ambiance, creating a memorable outing for families and couples.

The Village at Meridian: boasts one of the Treasure Valley's most stunning holiday settings, featuring a towering 50-foot Christmas tree

adorned with over 25,000 lights. This premier shopping and entertainment center offers festive decorations throughout its plaza, visits with Santa, and a family-friendly ice skating rink. The Village creates a vibrant holiday hub, making it an ideal destination for seasonal activities.

Glide on The Grove: Downtown Boise's Grove Plaza transforms into a festive gathering spot with its charming ice skating rink, open through the end of January. The rink's complimentary skate rentals make it accessible for everyone, while the surrounding holiday decorations enhance the experience. It's the perfect way to enjoy Boise's downtown holiday spirit under the stars.

Tree Lighting Ceremonies: Each city in the Treasure Valley hosts its own enchanting tree lighting ceremony, a hallmark of the holiday season. From Boise's grand Capitol tree to smaller community gatherings, these events bring neighbors together to celebrate with music, festivities, and the magical moment when the tree lights up the night. No matter where you are, you can find a tree lighting ceremony nearby to spark the holiday spirit.

Boise Christmas Lights Tour: Explore the city's most impressive home light displays using the Boise Christmas Lights Map, guiding you to festive neighborhoods across the Treasure Valley.

Holiday Bazaars and Markets: Discover unique gifts and crafts at various holiday bazaars popping up throughout the Boise area, supporting local artisans and adding a personal touch to your holiday shopping.

From Caldwell to Boise, these attractions showcase the Treasure Valley's love for the holiday season. With millions of lights, family activities, and festive events, there's no shortage of ways to create unforgettable memories this winter.



Glide on The Grove is completely free for the public to enjoy.

HIDDEN GEMS & LOCAL FAVORITES

Photo by Fudo Jahic



SPORTS IN IDAHO

Boise State Basketball brings thrilling games and unstoppable Bronco spirit!



There's a variety of locally owned coffee shops to explore!

Idaho's sports scene is packed with excitement, from Boise State's iconic blue turf to professional teams like the Idaho Steelheads, Boise Hawks, and Idaho Horsemen. Add in the Albertsons Boise Open and Front Street Fights, and there's something for every sports fan to enjoy.

Boise State University offers an incredible array of collegiate sports, creating a strong sense of community pride and thrilling entertainment. Football games at Albertsons Stadium are especially iconic, with the Broncos playing on the famous blue turf, a symbol of Boise's vibrant spirit. Beyond football, fans can cheer on basketball, soccer, gymnastics, and other sports in energetic venues filled with spirited fans. Boise State athletics provide year-round opportunities to engage with the community and enjoy high-quality collegiate competition.

The **Idaho Steelheads** bring exciting professional minor league hockey to the Treasure Valley. Playing at the Idaho Central Arena in downtown Boise, the Steelheads deliver fast-paced action and an electric game-day atmosphere. Fans of all ages can enjoy thrilling plays, lively crowds, and entertaining intermission activities. Whether you're a die-hard hockey fan or new to the sport, attending a Steelheads game is a quintessential Boise experience during the winter months.

The **Boise Hawks**, a Pioneer Baseball League team, offer family-friendly baseball fun throughout the summer at Memorial Stadium. With affordable tickets, themed promotions, and delicious ballpark concessions, a Hawks game is perfect for a casual outing. Don't miss their occasional Friday Night Fireworks shows, which add a spectacular finish to the evening. The Hawks provide an excellent way to relax, socialize, and enjoy America's pastime under the warm Idaho skies.

The **Idaho Horsemen** deliver intense indoor football action at the Ford Idaho Center in Nampa. As a professional arena football team, they're known for their high-energy, fast-paced games that keep fans on the edge of their seats. The intimate venue ensures every seat has a great view, and the passionate fanbase adds to the electrifying atmosphere. Horsemen games are an excellent option for sports fans looking for something unique and dynamic in the Treasure Valley.

The **Albertsons Boise Open** is a premier event on the Korn Ferry Tour, showcasing top-tier professional golf in a beautiful setting. Held annually at the Hillcrest Country Club, this tournament draws golf enthusiasts and newcomers alike to enjoy thrilling competition, breathtaking views, and world-class hospitality. Beyond the golf, the event features nightly concerts with nationally renowned artists, making it a unique blend of sports and entertainment. Proceeds from the Albertsons Boise Open benefit local charities, offering attendees an opportunity to support the community while enjoying an unforgettable experience.

Front Street Fights brings the excitement of live mixed martial arts (MMA) to the Treasure Valley. Hosted at the Idaho Central Arena in downtown Boise, these events showcase skilled fighters from the region and beyond, delivering intense, high-energy matchups. With its action-packed atmosphere, Front Street Fights is a must-see for combat sports fans or anyone looking for an electrifying night out. The intimate venue ensures a close view of the action, creating an engaging and memorable experience for all attendees.

SIP AND SAVOR COFFEE CULTURE

The coffee scene in the Treasure Valley is vibrant and diverse, with a mix of cozy cafés, innovative roasters, and community-focused spots. From Boise's bustling downtown to the charming neighborhoods of Eagle and Meridian, coffee lovers can enjoy everything from classic brews to unique, craft-inspired drinks, all while experiencing the warm, friendly atmosphere that defines the region.

The Coffee Mill in Boise's Barber Valley is a cozy café known for its house-made chai and laid-back vibe. With plenty of outdoor seating, it's the perfect spot to grab a hot drink and enjoy the surrounding natural beauty.

Alchemist Coffee in Boise offers a spacious, inviting atmosphere where you can savor expertly roasted, in-house brews. With its vintage charm and relaxed vibe, it's a great spot for both work and leisurely coffee sessions.

Flying M Coffeehouse is a comfortable, inclusive café known for its smooth coffee and quirky gift shop. It's a welcoming space where you can enjoy a great cup of coffee and connect with friends or new faces.

Push & Pour in Boise is a cozy, modern café that's a favorite among students and remote workers. Known for its on-site roasted coffee and relaxed vibe, it's the perfect spot to enjoy a cup or grab a bite during a productive day.

Broadcast Coffee in Boise offers a creative take on coffee, serving both classic and inventive drinks in a comfortable, laid-back setting. It's the perfect place to explore unique flavors while enjoying a welcoming, relaxed atmosphere.

Form & Function this modern, two-story café in downtown Boise blends great coffee with educational experiences, offering a deep dive into the coffee journey.

Coffee and Supply Co. in Eagle is a lively, friendly café known for its delicious coffee and tasty food. With a vibrant atmosphere, it's an ideal spot to socialize, work, or simply enjoy a great cup in a welcoming space.

Hyde Perk Coffee House in Boise's North End is a cozy, family-owned café known for its creative drinks and friendly atmosphere. With freshly baked pastries and a welcoming vibe, it's a great spot to unwind or catch up with friends.

Java in Boise offers a warm, inviting atmosphere with rich coffee blends and delicious food. With locations in Downtown Boise and Hyde Park, it's the perfect spot to relax or catch up on work while enjoying a freshly brewed cup.

The District Coffee House is a spacious nonprofit coffeehouse that serves locally roasted blends & baked treats in an airy modern space.

Slow by Slow Coffee Local coffee bar offering espresso drinks, pour-overs & tea in a chic, retro atmosphere.

Jovinos is a unique coffee and wine shop where you can enjoy a cup of coffee or a glass of wine, paired with small plates in a cozy setting.

Caffeina Coffee Roasting offers organic, fair-trade coffee in a cozy atmosphere, with patios perfect for relaxing and enjoying their fresh treats.

Royal Coffee Co in Meridian is a locally owned, family business specializing in espresso based coffee drinks, using organic coffee beans. They have created a delicious menu using only handpicked ingredients in unique and refreshing drinks that also include 100% crushed fruit smoothies and homemade freezes.

ENTERTAINMENT VENUES

The Treasure Valley offers a rich mix of entertainment, with something for every taste. From live music and theater performances to outdoor festivals and sports events, there's always something happening in the area, making it a lively destination for culture, fun, and relaxation.

The Ford Idaho Center in Nampa is a premier event venue hosting concerts, sports events, and trade shows. It's the largest indoor arena in the state, offering a variety of entertainment year-round.

The Knitting Factory in Boise is a popular live music venue known for hosting a diverse range of performances. With its intimate setting and great acoustics, it's a top spot for music lovers in the city.

Extra Mile Arena is an expansive indoor venue that hosts Boise State sporting matches, headliner concerts & community events.

The Morrison Center in Boise is a premier performing arts venue, featuring Broadway shows, concerts, and cultural events. It's the go-to spot for top-tier entertainment in the heart of the city.

The Revolution Concert House in Garden City is a vibrant venue offering live music, concerts, and events. With its intimate setting and great acoustics, it's a go-to spot for an up-close music experience.

Idaho Central Arena in Boise is a versatile venue for sports, concerts, and family events. It's home to the Idaho Steelheads hockey team and hosts a variety of live entertainment year-round.

The Egyptian Theatre in Boise is a historic venue offering a range of performances, from films to live shows. Its stunning architecture and intimate setting make it a unique destination for cultural events.

Outlaw Field in Boise is an outdoor concert venue located at the Idaho Botanical Garden. Known for its scenic backdrop and intimate atmosphere, it hosts a variety of live music events during the summer.

Treefort Music Hall in Boise is a lively venue hosting a variety of live music, events, and performances. It's a key spot for both local and touring acts, contributing to Boise's vibrant music scene.

The Olympic Venue in Boise is a popular entertainment spot featuring bowling, arcade games, and a full-service bar. It's a fun, casual place for group outings, live music, and events in a lively atmosphere.

The Visual Arts Collective (VAC) in Garden City is a vibrant gallery and event space that showcases local art, live performances, and community events. It's a creative hub for artists and art lovers, offering a unique blend of visual and performing arts.

Over the years, there have been a limited number of concerts allowed on the iconic blue turf at Boise State University. Garth Brooks performed in June 2019, Luke Combs in May 2023, and Post Malone in June 2025.

CRAFTED COCKTAILS

The Highlander Rooftop Bar is located on the top floor of Hotel Renegade. To access, enter the lobby and take the elevator all the way up!

Idaho boasts a vibrant bar scene with something for everyone. From hidden speakeasies and themed taverns to rooftop lounges with stunning views, these unique spots make the area a must-visit for craft cocktails, local brews, and unforgettable experiences.

Amsterdam Lounge is a vibrant, high-energy bar known for its unique cocktails, lively atmosphere, and energetic crowd. With its eclectic décor and upbeat vibe, it's a popular spot for dancing, socializing, and enjoying great drinks.

8 Horses Lounge is a stylish, laid-back bar featuring a 15-ton bank vault, and known for its expertly crafted cocktails and welcoming ambiance. With its chic décor and cozy vibe, it's a favorite spot for relaxing, socializing, and enjoying exceptional drinks in good company.

The Highlander at Hotel Renegade in Boise is a unique lounge offering a great selection of craft cocktails, beer, wine, and flavorful eats. With its relaxed atmosphere and stunning views, it's a local favorite for drinks and casual bites.

The Gatsby is an elegant speakeasy cocktail bar inspired by the Roaring Twenties, featuring craft drinks, a speakeasy vibe, and live music in a chic, vintage setting.

The Mode is a trendy cocktail bar known for its inventive drinks and sleek, modern ambiance. It's the perfect spot for enjoying crafted cocktails in a stylish and intimate setting.

Thick as Thieves is a stylish bar and restaurant known for its craft cocktails and relaxed, intimate atmosphere. It's a local favorite for a unique nightlife experience, blending great drinks with a cozy vibe.

Press and Pony is a cocktail bar offering creative drinks and a cozy, upscale atmosphere. It's a go-to spot for craft cocktails, elegant décor, and a sophisticated night out.

Waterbear Bar is a unique and energetic bar with a fun, inclusive vibe. Offering creative cocktails and a lively atmosphere, it's a great spot for socializing and enjoying a night out.

The Roosevelt is a chic bar and restaurant offering craft cocktails and a stylish atmosphere. It's a popular spot for enjoying great drinks, delicious food, and a relaxed, upscale vibe.

Syringa Bar is a cozy neighborhood bar known for its great drinks and friendly vibe. It's the perfect spot to relax, enjoy a craft cocktail, and unwind with friends.



LOCAL BREWERIES

From ciders to stouts, beer fans can find many breweries to choose from.

The Treasure Valley is home to a thriving craft beer scene, boasting a wide variety of breweries offering unique and flavorful brews. From downtown Boise's vibrant brewery hubs to cozy spots in surrounding towns like Meridian and Nampa, there's something for every beer enthusiast. Many breweries feature taprooms with live music, food trucks, and family-friendly atmospheres.

Here are 15 notable breweries in the area:

PAYETTE BREWING COMPANY

Established in 2011, Payette Brewing is one of Idaho's largest breweries, known for its expansive taproom and outdoor space featuring a grassy area, fire pit, and games.

BOISE BREWING

A community-supported brewery offering a variety of craft beers, Boise Brewing is located near Boise State University and downtown, making it easily accessible.

SOCKEYE BREWING

Founded in 1996, Sockeye Brewing offers a range of beers tied to Idaho's heritage, including year-round, seasonal, and limited-release options.



MAD SWEDE BREWING CO

Drawing inspiration from Scandinavian heritage, this brewery offers a diverse selection of IPAs, porters, and seasonal beers, all enjoyed in a welcoming Boise tasting room since 2016.

CLAIRVOYANT BREWING

A cozy neighborhood brewery offering a range of beers, Clairvoyant Brewing is located just beyond downtown Boise and features a welcoming atmosphere with live music events.

CLOUD 9 BREWERY

As Idaho's only certified organic brewery, Cloud 9 offers six year-round taps and six rotating taps, complemented by a menu of locally sourced, organic ingredients.

BARBARIAN BREWING

Specializing in unique and experimental brews, Barbarian Brewing has a taproom in Garden City and a downtown Boise location, offering a diverse selection of craft beers.



Lost Grove Brewery crafts community and exceptional local brews in Boise!

HIGHLANDS HOLLOW BREWHOUSE

Established in 1992, it's Boise's oldest microbrewery, offering handcrafted ales and a menu of comfort food, making it a staple in the local beer community.

POWDERHAUS BREWING

Inspired by Idaho's wilderness, Powderhaus Brewing offers a variety of craft beers that cater to outdoor enthusiasts and beer lovers alike.

WESTERN COLLECTIVE

Located in Garden City, Western Collective combines a brewery and coffee bar, offering a unique space with a variety of craft beers and beverages.

MOTHER EARTH BREW CO.

Based in Nampa, Mother Earth Brew Co. produces a range of craft beers, contributing to the Treasure Valley's rich beer culture.

BEAR ISLAND BREWING COMPANY

A Boise-based brewery known for its innovative beers, Bear Island Brewing adds to the diverse craft beer offerings in the area.

COUNTY LINE BREWING

Located in Garden City, County Line Brewing offers a selection of craft beers in a welcoming taproom environment.

LOST GROVE BREWING

A Boise brewery known for its commitment to sustainability and community engagement, offering a variety of craft beers.

10 BARREL BREWING

Originally from Bend, Oregon, 10 Barrel Brewing has a location in Boise, offering a range of craft beers and a full menu in a lively downtown setting.

These breweries contribute to the Treasure Valley's dynamic craft beer scene, each offering unique flavors and experiences for both locals and visitors to enjoy.



FAMILY FUN

Splash into adventure and fun at Roaring Springs Water Park!



EXPLORE & LEARN

Spark curiosity and explore hands-on fun at the Discovery Center!

Idaho is a treasure trove of family-friendly adventures that promise fun for all ages. Whether you're new to the area or rediscovering your hometown, the Treasure Valley offers countless opportunities for families to create unforgettable memories. From outdoor escapades to exciting indoor activities, there's something for everyone to enjoy.

ZOO BOISE

Explore the wonders of the animal kingdom at Zoo Boise, where families can see wildlife from around the world and participate in interactive exhibits that delight kids and adults alike.

BOISE ROSE GARDEN

Stroll through the Boise Rose Garden, a serene spot filled with vibrant blooms, perfect for family photos and peaceful walks.

MK NATURE CENTER

Discover Idaho's unique ecosystems at MK Nature Center, where underwater viewing windows and wildlife exhibits provide an up-close look at nature.

RENT A PADDLE BOAT AT JULIA DAVIS

Glide across the pond in Julia Davis Park with a paddle boat rental—a fun and relaxing way to enjoy the outdoors with the family.

U-PICK FLOWER FARMS

Spend a sunny afternoon at one of the Treasure Valley's U-pick flower farms, where kids can pick their own beautiful bouquets to take home.

ROARING SPRINGS WATER PARK

One of the Northwest's largest water parks offers thrilling slides, wave pools, lazy rivers, kid-friendly zones, and dining for all ages.

WAHOOZ FAMILY FUN ZONE

Packed with thrilling attractions like go-karts, laser tag, and miniature golf, Wahooz is a one-stop destination for high-energy family entertainment.

PLANET KID

This indoor play center offers climbing walls, slides, and obstacle courses, giving kids an exciting place to burn off energy no matter the weather.

FAST LANE INDOOR RACING

Rev up the fun at Fast Lane Indoor Racing, where kids and adults can race go-karts in an adrenaline-filled experience.

IDAHO ICE WORLD

Lace up your skates and hit the rink at Ice World, a favorite destination for public skating sessions and family fun on the ice.

VISIT AN ESCAPE ROOM

Challenge your family to solve puzzles and unlock clues at one of Boise's escape rooms, where teamwork and creativity lead to victory.

JUMPTIME

Bounce into action at Jumptime, an indoor trampoline park with activities like dodgeball and foam pits for hours of jumping excitement.

The Treasure Valley is rich with opportunities to learn, explore, and connect with Idaho's vibrant history, culture, and natural wonders. From museums that inspire curiosity to hands-on activities that ignite creativity, there's something for everyone to discover. Get ready to dive into the stories, art, and experiences that make this region truly special.

DISCOVERY CENTER OF IDAHO

Ignite curiosity at the Discovery Center, where interactive exhibits in science, technology, engineering, and math provide hands-on learning fun for all ages.

CHILDREN'S MUSEUM OF IDAHO

Spark young imaginations with interactive play and learning experiences at the Children's Museum, designed for kids to explore and grow.

WORLD CENTER FOR BIRDS OF PREY

Discover the beauty of raptors and learn about global conservation efforts at this world-renowned center, home to falcons, eagles, and more.

BOISE ART MUSEUM

Dive into the creative world at the Boise Art Museum, featuring contemporary and traditional art exhibitions, workshops, and family-friendly activities.

BOISE ART GLASS

Unleash your inner artist at Boise Art Glass, offering glassblowing classes that are beginner-friendly and perfect for ages 8 and up.

IDAHO STATE MUSEUM

Step back in time and explore Idaho's diverse history through immersive exhibits that bring the stories of the Gem State to life.

IDAHO BLACK HISTORY MUSEUM

Located in a historic church, this museum offers a compelling look into the history and contributions of African Americans in Idaho.

BASQUE MUSEUM & CULTURAL CENTER

Celebrate the rich heritage of the Basque community through exhibits, artifacts, and cultural programs in the heart of Boise's Basque Block.

BOISE'S HISTORIC DISTRICT

Take a stroll through Boise's historic district and discover charming architecture, landmarks, and stories from the city's early days.

BOISE TROLLEY TOUR

Hop aboard a Boise Trolley Tour to see the city in a unique way, visiting historic landmarks and learning fascinating local stories.

WARHAWK AIR MUSEUM

Soar through history at the Warhawk Air Museum, showcasing vintage aircraft, military artifacts, and personal stories from wartime.

IDAHO MILITARY HISTORY MUSEUM

Explore Idaho's military legacy through artifacts and exhibits that honor the contributions of those who served in various conflicts.

AQUATIC ADVENTURES

SWIMMING POOLS

CITY OF BOISE OUTDOOR POOLS

Ivywild Pool

Natatorium Pool and Hydrotube

INDOOR AQUATIC CENTERS

Boise City Aquatics Center

Idaho Central Aquatic Center

YMCA FACILITIES

Downtown Boise YMCA

South Meridian YMCA

Caldwell YMCA

Drift into adventure while floating the serene and scenic Boise River!

Whether you're looking for relaxation or excitement, there's something for everyone!

A quintessential Boise experience, **Floating the Boise River** is a serene and scenic adventure. Start your journey at Barber Park, where you can rent equipment or bring your own, and drift along the gentle currents to Ann Morrison Park. A convenient shuttle service ensures an easy return to your starting point, making it a stress-free outing for families and friends.

The float typically takes two to three hours, depending on river flow and stops along the way. Life jackets are required for children under 14 and highly recommended for all participants to ensure safety. Equipment rentals, including rafts and tubes, are available seasonally from late spring through early fall, depending on river conditions. Always check water levels and weather forecasts before heading out, as these can affect the safety and enjoyment of your float.

Help Keep Our Rivers Clean: Glass containers are prohibited on the Boise River, so be sure to pack beverages in reusable or plastic containers to help preserve this beautiful waterway!

For those seeking more active water fun, **Lucky Peak Reservoir** is a favorite destination. Spend the

day swimming, surfing, or jet skiing on its clear waters. The area also offers several access points to enhance your visit. **Sandy Shores** provides a picturesque beach for sunbathing and picnics, while **Discovery Park** is perfect for families with its spacious areas for play and relaxation. For boating enthusiasts, **Spring Shores Marina** offers boat rentals, docks, and easy access to the reservoir.

Located near downtown Boise, **Quinn's Pond** is a haven for paddleboarding, kayaking, and swimming. Adjacent to the pond, **Boise's Whitewater Park** offers engineered waves ideal for surfing and kayaking, drawing water sports enthusiasts from across the region. Whether you're a seasoned pro or trying something new, this area provides endless excitement.

Just a short drive from Boise, **Lake Lowell** is a tranquil retreat for nature lovers. This expansive lake is perfect for boating, fishing, kayaking, and birdwatching, with surrounding wildlife refuges that add to its serene charm. Pack a picnic and enjoy a peaceful day on the water.

From floating rivers to thrilling water sports, the Treasure Valley's diverse water destinations ensure that adventure and relaxation are never far away. Whether you're paddling on Quinn's Pond or jet skiing on Lucky Peak, there's no shortage of ways to make a splash in Idaho!

BOUNTY OF THE VALLEY FARMERS MARKETS

Fresh finds and local flavors at vibrant farmers markets across the valley

Farmers markets are a cornerstone of community life in the Treasure Valley, offering fresh produce, artisanal goods, and a chance to connect with local growers and makers. Here's a look at some of the top markets in the area:

BOISE FARMERS MARKET

Located at 1500 Shoreline Drive, the Boise Farmers Market focuses on local food and agricultural products. Open on Saturdays from April through October, this market features fresh produce, baked goods, and specialty items. It also includes a mobile market during summer, increasing accessibility to fresh, local food.

CAPITAL CITY PUBLIC MARKET

As Idaho's largest outdoor market, the Capital City Public Market is held on Saturdays in Downtown Boise's Grove Plaza from mid-April to mid-December. This vibrant market offers a mix of fresh produce, artisan crafts, and ready-to-eat foods, creating a lively atmosphere for visitors and locals alike.

MERIDIAN MAIN STREET MARKET

The Meridian Main Street Market brings the community together every Saturday from April through October at 33 E Broadway Avenue. This market highlights local farmers, artisans, and food vendors, with a special focus on supporting young entrepreneurs and fostering a family-friendly environment.

EAGLE SATURDAY MARKET

Nestled in Heritage Park, the Eagle Saturday Market is open on Saturdays from May through October. Known as a handmade market, it features arts, crafts, local produce, and live music, making it a perfect spot for a weekend outing with family and friends.

NAMPA FARMERS MARKET

Held in Lloyd Square Park, the Nampa Farmers Market operates on Saturdays from April through October. Established in 1989, this market offers a welcoming space to browse fresh produce, crafts, and food items in the heart of historic downtown Nampa.

CALDWELL FARM TO FORK FARMERS MARKET

Located at Indian Creek Plaza, this market is open on Tuesdays from May through September. It celebrates Caldwell's rich agricultural heritage, offering fresh produce and unique gifts. Visitors can also enjoy the "Tuesdays on the Creek" concert series, adding to the festive atmosphere.

These farmers markets are more than just places to shop—they are community hubs that highlight the Treasure Valley's vibrant local culture and commitment to fresh, sustainable living.

A TASTE OF TREASURE VALLEY

LOCAL WINERIES

The Treasure Valley is a blossoming destination for wine enthusiasts, offering a mix of picturesque vineyards, boutique wineries, and urban tasting rooms. Idaho's Snake River Valley AVA (American Viticultural Area) is the heart of the region's wine production, boasting the perfect conditions for growing exceptional grapes. Whether you're seeking a tranquil escape in the countryside or a chic urban wine experience, the Treasure Valley has something for every palate.

SUNNYSLOPE WINE TRAIL

Located in Caldwell, the Sunnyslope Wine Trail is a must-visit for any wine lover. This scenic route winds through the heart of Idaho's wine country, offering breathtaking views of the Owyhee Mountains and Snake River. Home to more than a dozen wineries and vineyards, the trail features standout destinations like Ste. Chapelle Winery, known for its sweeping views and diverse selection, and Huston Vineyards, a boutique winery celebrated for its small-batch Malbec and Chicken Dinner Red. Other notable stops include Sawtooth Estate Winery, with its sustainably farmed vineyards and award-winning Rieslings, and Fujishin Family Cellars, which offers handcrafted blends and classic varietals. Along the trail, you can enjoy tastings, tours, and events that highlight the region's flourishing wine scene.

GARDEN CITY: A RISING URBAN WINE HUB

Just minutes from downtown Boise, Garden City is home to a vibrant cluster of urban wineries that combine modern aesthetics with artisanal winemaking. Telaya Wine Co. stands out for its riverside location and elegant tasting room, offering bold reds and crisp whites. Cinder Wines is another local favorite, renowned for its Syrah, Tempranillo, and Viognier, all crafted with a dedication to quality and innovation. For those seeking something adventurous, Split Rail Winery pushes boundaries with unique blends and unconventional techniques, making it a must-visit spot for curious wine drinkers.

BOISE AREA: BOUTIQUE WINERIES AND TASTING ROOMS

The city of Boise offers a dynamic wine culture, with a variety of bars, restaurants, and specialty venues showcasing exceptional selections. Bodovino, located nearby in Meridian, combines wine tasting with a modern twist, offering over 100 wines by the glass through an innovative self-pour system.

GROCERY STORES



Convenient options and local favorites for all your grocery needs!

The Treasure Valley offers a wide range of grocery store options to meet every need and preference. Popular nationwide chains like Albertsons, WinCo Foods, Fred Meyer, and Walmart provide convenient locations and affordable prices. For natural and organic selections, you'll find Whole Foods, Natural Grocers, and Trader Joe's. A regional favorite such as Ridley's Family Markets add a local touch, while Costco caters to bulk shoppers. Farmers markets and specialty stores also thrive, giving you access to fresh, local produce and unique goods. Whether you're stocking up or seeking gourmet ingredients, the Treasure Valley has you covered!

MAJOR SUPERMARKET CHAINS:

Albertsons: A well-known chain offering a wide selection of products, including fresh produce, bakery items, and a full-service deli.

WinCo Foods: An employee-owned supermarket known for its extensive bulk food sections and cost-effective pricing.

Walmart Supercenter: Offers a comprehensive grocery section alongside general merchandise, providing a one-stop shopping experience.

Fred Meyer: A subsidiary of Kroger, this store combines groceries with a variety of other departments, including apparel and home goods.

Ridley's Family Markets: offers fresh produce, meats, and essentials with friendly service and a community-focused, family-friendly shopping experience.

NATURAL AND ORGANIC MARKETS:

Whole Foods Market: Specializes in natural and organic products, catering to health-conscious consumers.

Trader Joe's: Offers a unique selection of affordable gourmet, organic, and specialty items.

Boise Co-op: A community-owned natural foods store focusing on organic, bulk, vegan, and vegetarian groceries.

Natural Grocers: offers organic groceries, fresh produce, vitamins, and eco-friendly products for health-conscious, sustainable living.

DISCOUNT AND BULK RETAILERS:

Costco Wholesale: A membership-only warehouse club providing bulk groceries and household items at discounted prices.

Grocery Outlet: A discount retailer offering overstocked and closeout products from name-brand and private-label suppliers.

US Foods CHEF'STORE: A bulk retailer offering wholesale groceries, produce, and restaurant-quality supplies, perfect for events or large families.

SPECIALTY AND LOCAL MARKETS:

Vogel Farms Country Market: Provides GMO-free beef, eggs, and custom gift baskets, serving as a healthy alternative to traditional grocery stores.

FarmDeliver: Offers year-round, farm-to-door grocery delivery from Treasure Valley and Southern Idaho farms, including pasture-raised meats and organic produce.

Idaho Food Coop: An online store offering curated boxes with items selected from local farms and trusted producers, with convenient pick-up locations in the Treasure Valley.



CARING FOR YOU HEALTHCARE IN IDAHO

ST. LUKE'S HOSPITALS AND MEDICAL SERVICES IN THE TREASURE VALLEY

St. Luke's Health System is a cornerstone of healthcare in the Treasure Valley, offering world-class medical services across its locations in Boise, Meridian, Nampa, and beyond. Known for its commitment to excellence and innovation, St. Luke's provides comprehensive care to meet the diverse needs of the region's growing population.

The Boise Medical Center is the system's flagship facility, equipped with cutting-edge technology and specialized services in areas like cancer care, cardiology, orthopedics, and pediatrics. The Meridian and Nampa campuses enhance accessibility by providing high-quality care close to home, including emergency services, advanced surgical options, and maternity care, ensuring residents across the valley receive exceptional support.

St. Luke's dedication to the community extends beyond its hospital walls. With a focus on preventive care, wellness programs, and collaborations with local organizations, the system actively promotes healthier lifestyles throughout the Treasure Valley. From primary care to specialized treatments, St. Luke's delivers compassionate, patient-centered healthcare at every stage of life.

St. Luke's Children's Hospital in Boise stands out as the only dedicated children's hospital in Idaho. Offering specialized pediatric care across a wide range of medical fields, it serves as the state's sole Children's Miracle Network Hospital. With comprehensive services tailored to the needs of infants, children, and adolescents, St. Luke's Children's Hospital is a trusted resource for families seeking expert and compassionate care for their youngest members.

Hospital locations in Boise, Meridian, Eagle and Nampa

SAINT ALPHONSUS HOSPITALS AND MEDICAL SERVICES IN THE TREASURE VALLEY

Saint Alphonsus Health System is a trusted leader in healthcare across the Treasure Valley, with hospitals and clinics in Boise, Nampa, and Eagle. Dedicated to providing compassionate and innovative care, Saint Alphonsus is known for its advanced medical services and commitment to the health of the community.

The Boise hospital is a regional hub for trauma and critical care, offering state-of-the-art emergency services, surgical expertise, and specialty care in areas like cardiovascular health, neuroscience, and orthopedics. The Nampa Medical Center expands access to these exceptional services, including a maternity and birthing center, cancer care, and outpatient clinics, all conveniently located to serve residents across the valley.

Saint Alphonsus also emphasizes holistic health through wellness programs, preventive care, and outreach initiatives designed to improve the overall well-being of the community. With a patient-first approach, the system integrates advanced technology and compassionate care to meet the needs of every individual.

Hospital locations in Boise, Eagle, Meridian and Nampa

BOISE VA MEDICAL CENTER

The Boise VA Medical Center is a vital resource for veterans in the Treasure Valley, offering comprehensive healthcare services tailored to those who have served our nation. Located in Boise, the center provides a welcoming and supportive environment where veterans can access quality medical care and specialized programs.

As part of the U.S. Department of Veterans Affairs, the Boise VA Medical Center offers a full range of services, including primary care, mental health support, and specialty treatments in areas like cardiology, orthopedics, and oncology.

Veterans can also benefit from rehabilitation programs, prosthetics, and telehealth services, ensuring care is accessible and convenient.

The center's commitment to holistic well-being extends to social work services, housing assistance, and support for families. Outreach programs and community partnerships further enhance the quality of care and resources available to veterans across the Treasure Valley.

For veterans relocating to the area, the Boise VA Medical Center is a cornerstone of support, providing exceptional healthcare and fostering a strong sense of community for those who have given so much in service to our country.

TREASURE VALLEY HOSPITAL

Treasure Valley Hospital, located in Boise, is a physician-owned surgical hospital renowned for its personalized approach to healthcare and high-quality patient outcomes. With a focus on providing specialized care in a state-of-the-art facility, Treasure Valley Hospital stands out as a trusted choice for medical services in the region.

The hospital is known for its excellence in outpatient and elective surgical procedures, including orthopedics, spine surgery, general surgery, and more. Its team of highly skilled surgeons and healthcare professionals prioritize patient comfort and safety, ensuring a seamless experience from consultation to recovery.

Unlike larger hospital systems, Treasure Valley Hospital offers a more intimate and patient-focused environment, with private rooms and attentive staff that make every visit as comfortable as possible. The hospital consistently ranks high in patient satisfaction and clinical outcomes, reflecting its dedication to exceptional care.

WEST VALLEY MEDICAL CENTER

West Valley Medical Center, located in Caldwell, is a trusted healthcare provider serving the western Treasure Valley. Known for its compassionate care and advanced medical

services, West Valley Medical Center offers a wide range of treatments and specialties to meet the needs of its growing community.

The hospital is equipped with modern facilities and provides comprehensive care, including emergency services, orthopedic surgery, cardiology, and women's health services. Its commitment to excellence extends to advanced diagnostic imaging and rehabilitation programs, ensuring patients receive thorough and effective treatment.

West Valley Medical Center also emphasizes community wellness with programs focused on preventive care and education, helping residents maintain their health and well-being. With a dedicated team of healthcare professionals and a patient-first approach, the hospital delivers personalized care tailored to each individual.

VALOR HEALTH

Valor Health, located in Emmett, is a community-focused healthcare provider offering personalized, high-quality medical services to residents of Gem County and the surrounding Treasure Valley. As a trusted name in rural healthcare, Valor Health is committed to meeting the unique needs of its community through compassionate care and modern medical practices.

The facility provides a wide range of services, including primary care, emergency care, surgical services, and specialty clinics. Valor Health is also dedicated to preventive care, offering wellness programs, health screenings, and educational resources to help individuals and families stay healthy.

With a focus on accessibility, Valor Health ensures patients receive the care they need close to home. Its dedicated team of physicians, nurses, and staff are known for their friendly, patient-first approach, making every visit a positive experience.

LET'S MAKE IDAHO HOME

Southeast Boise overlooking the beautiful foothills.

The Treasure Valley boasts a thriving residential real estate market, offering diverse options for buyers and sellers alike. From charming neighborhoods with historic homes to master-planned communities with modern amenities, the region continues to attract newcomers and support a growing population. Whether you're seeking a family-friendly neighborhood, a luxury home, or a quaint starter house, the area's real estate market provides opportunities for every lifestyle.

A highlight of this dynamic market is the annual **Parade of Homes**, held each spring and fall in both Ada and Canyon Counties. This highly anticipated event showcases the area's finest new construction homes, offering a glimpse into the latest trends in architecture, design, and technology. Visitors have the unique opportunity to tour beautifully crafted homes, meet local builders, and gather inspiration for their own projects.

The Parade of Homes is more than just a showcase—it's a celebration of the Treasure Valley's vibrant housing market and the talented professionals who bring these homes to life. From innovative layouts to luxurious finishes, the event highlights the exceptional quality and creativity that define the region's residential offerings. For homebuyers, homeowners, or anyone dreaming of their perfect space, the Parade of Homes is an inspiring and must-see experience.

In addition to its thriving real estate market, there's countless neighborhoods that cater to a variety of lifestyles. From affordable home communities perfect for first-time buyers to luxurious enclaves offering unmatched elegance, there's something for everyone. Here's a quick glance at some of the most loved and highly sought-after neighborhoods across the area, each with its own unique charm and appeal.



Lakemoor home in Eagle

BOISE HIGHLANDS

Situated near foothills with stunning views and luxury homes, offering a mix of traditional and contemporary styles.

WARM SPRINGS MESA

Known for skyline views and larger lots, offering unique architectural designs in a peaceful foothills setting.

EAST END

A historic neighborhood with tree-lined streets, older homes, and a charming, close-knit community atmosphere.

HARRIS RANCH

A community-centric neighborhood with modern and traditional home styles near river trails and outdoor recreation.

RIVER RUN

An upscale neighborhood with lush landscaping, high-end homes, and a peaceful riverfront setting.

DRY CREEK RANCH

A master-planned community emphasizing sustainability and outdoor living, featuring modern and spacious homes.

HIDDEN SPRINGS

A sustainable, family-friendly community with homes designed to preserve natural surroundings and encourage neighborly connections.

AVIMOR

A foothills community focused on outdoor recreation, featuring a mix of traditional and contemporary homes.

GARDEN CITY WATERFRONT DISTRICT

A vibrant community nestled by the Boise River and Greenbelt, offering a mix of modern townhomes and luxury homes.

THE WOODS AT RIVERSIDE

An exclusive, gated community nestled along the Boise River, offering luxury homes surrounded by mature trees, walking paths, and serene natural beauty.

MERIDIAN SPURWING SUBDIVISION

A prestigious golf course community featuring luxury homes, lush landscaping, and exclusive amenities, including a clubhouse, pool, and tennis courts.

THE KEEP

An upscale community offering luxury custom homes, spacious lots, and a peaceful setting with beautiful views.

FAIRBOURNE

A master-planned community featuring modern homes, scenic walking paths, community parks, and a pool, perfect for family-friendly living.

EAGLE LAKEMOOR

An upscale gated community offering waterfront properties, scenic walking paths, tennis courts, and convenient access to downtown Eagle.

TWO RIVERS

A prestigious neighborhood featuring waterfalls, ponds, lush landscaping, walking paths, and a clubhouse, with luxurious homes in a serene setting.

BANBURY

A golf course community with luxury homes, tree-lined streets, and stunning views, built around the BanBury Golf Course.

CASTLEBURY

A desirable neighborhood with custom luxury homes, mature landscaping, large lots, and a peaceful atmosphere ideal for families and retirees.

MACE RIVER RANCH

A waterfront community along the Boise River with beautiful homes, walking trails, a community pool, clubhouse, and abundant green spaces.

STAGS CROSSING

A premier community featuring luxury homes, expansive lots, and a tranquil setting with easy access to Eagle's top amenities.

LAGUNA POINTE

An exclusive waterfront community offering custom homes, private ponds, and stunning views, perfect for serene and upscale living.

ISLAND WOODS

A picturesque neighborhood with beautiful homes, tree-lined streets, and community amenities including a pool, tennis courts, and walking paths.

RIVERSTONE

A gated resort-style community featuring a private beachfront park, a clubhouse with a state-of-the-art gym, a serene swimming pool, and access to the Boise River.

LEGACY

A sprawling lifestyle community spanning 590 acres, offering two community pools, tennis courts, a 3-hole executive practice golf course, and stunning water features.



Legacy in Eagle offers stunning waterfront homes and serene water features!

KUNA INDIAN CREEK RANCH

A vibrant, master-planned community featuring modern homes, walking paths, and direct access to Indian Creek for outdoor recreation.

VALOR

An upscale golf community offering luxury homes with scenic views, family-friendly amenities, and access to a premier golf course.

PATAGONIA

A master-planned community offering modern and traditional homes with walking trails, open spaces, and a community swimming pool.

NAMPA REDHAWK RIDGE

A stunning golf course community with modern homes, scenic views, and easy access to Lake Lowell and outdoor recreation.

OSPREY ESTATES

An upscale community offering spacious custom homes near Lake Lowell, with a focus on luxury living and natural surroundings.

LONE STAR RANCH

An acreage community featuring newer, spacious modern estates, offering a peaceful setting just minutes from the beauty of Lake Lowell.

CALDWELL PURPLE SAGE ESTATES

An acreage community with beautiful custom homes on half-acre to one-acre-plus lots, located near Purple Sage Golf Course.

TIMBERSTONE

A golf course community offering luxury homes on large lots with scenic views and easy access to TimberStone Golf Course.

MIDDLETON CASCADE HILLS

A serene community offering newer homes on spacious lots, stunning views of the surrounding foothills, and a peaceful atmosphere.

STONEHAVEN

An upscale neighborhood featuring newer homes with scenic rural surroundings and close proximity to Purple Sage Golf Course.

QUAIL HAVEN

A peaceful community with modern homes, a family-friendly atmosphere, and convenient access to Middleton's schools and parks.

STAR HILLSDALE ESTATES

An exclusive acreage community with spacious custom homes, equestrian facilities, and breathtaking views of the Treasure Valley.

TORCHLIGHT ESTATES

A luxury community featuring upscale homes on large lots, designed for privacy and a tranquil rural lifestyle.

HERON RIVER

A master-planned community offering a mix of traditional and stunning waterfront homes, scenic views, walking paths, a clubhouse, and a resort-style pool.

Discover the unique charm and offerings of neighborhoods across the Treasure Valley. For personalized insights and assistance in finding subdivisions or homes that match your ideal criteria, call **Powerhouse Real Estate Group** at **208-920-5966**.



Exceptional homes built with unmatched quality and craftsmanship.



Capitol Building in Downtown Boise

The Treasure Valley area is brimming with unique landmarks and must-see destinations that reflect its rich history, vibrant culture, and stunning natural surroundings. From iconic architectural gems and historic sites to outdoor adventures and community gathering spots, there's no shortage of experiences to enjoy. Whether you're exploring the lively downtown, hiking the Boise Foothills, or soaking in the local art and culture, these treasured locations offer something for everyone to discover and love.

IDAHO STATE CAPITOL BUILDING

A stunning example of neoclassical architecture, Idaho's Capitol is a centerpiece of the city. Visitors can explore its beautifully restored interiors and learn about the state's rich political and cultural history through exhibits and tours.

EGYPTIAN THEATRE

This historic downtown venue features a one-of-a-kind Egyptian Revival design. Hosting classic films, live performances, and cultural events, it's a must-visit for history buffs and entertainment lovers alike.

BOISE TRAIN DEPOT

Perched on a hill overlooking downtown Boise, this Spanish-style landmark offers elegant architecture, beautifully landscaped grounds, and breathtaking views of the city skyline.



Camel's Back Park in Boise North End.

THE GROVE PLAZA

A lively downtown gathering spot, The Grove Plaza is home to concerts, farmers markets, and community events. Its central location makes it a hub of activity and a favorite for locals and visitors.

THE BASQUE BLOCK

Celebrating Boise's Basque heritage, this cultural district offers authentic cuisine, a fascinating museum, and vibrant festivals that bring the community together.

TABLE ROCK

A favorite for outdoor enthusiasts, Table Rock features hiking and biking trails that lead to panoramic views of the Treasure Valley, making it an iconic destination for breathtaking sunsets.

OLD IDAHO PENITENTIARY

Step back in time at this historic prison, which offers guided tours, true crime exhibits, and special events. Visitors can explore the grounds and learn about its storied past.

IDAHO BOTANICAL GARDEN

Located in Boise's historic district, this scenic garden features themed displays, seasonal events, and live music. It's a peaceful retreat for nature lovers and families.



Table Rock offers trails and stunning views for outdoor enthusiasts!

FREAK ALLEY GALLERY

Boise's outdoor art gallery is a dynamic space featuring ever-changing murals and graffiti. A walk through Freak Alley offers a vibrant showcase of the city's creative spirit.

ANNE FRANK HUMAN RIGHTS MEMORIAL

A serene and thought-provoking park dedicated to promoting human rights and education. It's a peaceful space for reflection and a vital cultural landmark.

BOISE WHITEWATER PARK

A thrilling outdoor destination for kayaking, surfing, and paddleboarding, this innovative park on the Boise River provides year-round fun and recreation.

CAMEL'S BACK PARK

A beloved community park featuring hiking trails, open fields, and views of the Boise Foothills. It's also a venue for annual events that bring families together.

HYDE PARK

Nestled in Boise's North End, Hyde Park is a charming historic district filled with boutique shops, cafes, and local eateries. Its quaint streets are perfect for a leisurely stroll.

BRUNEAU DUNES STATE PARK

Located just outside Boise, this state park features North America's tallest single-structured dune, offering unique hiking and stargazing experiences.

THE VILLAGE AT MERIDIAN

A premier shopping and entertainment destination with European-inspired architecture, children's play area, and world-class hourly fountain shows choreographed to lights and music.

THE KUNA CAVES

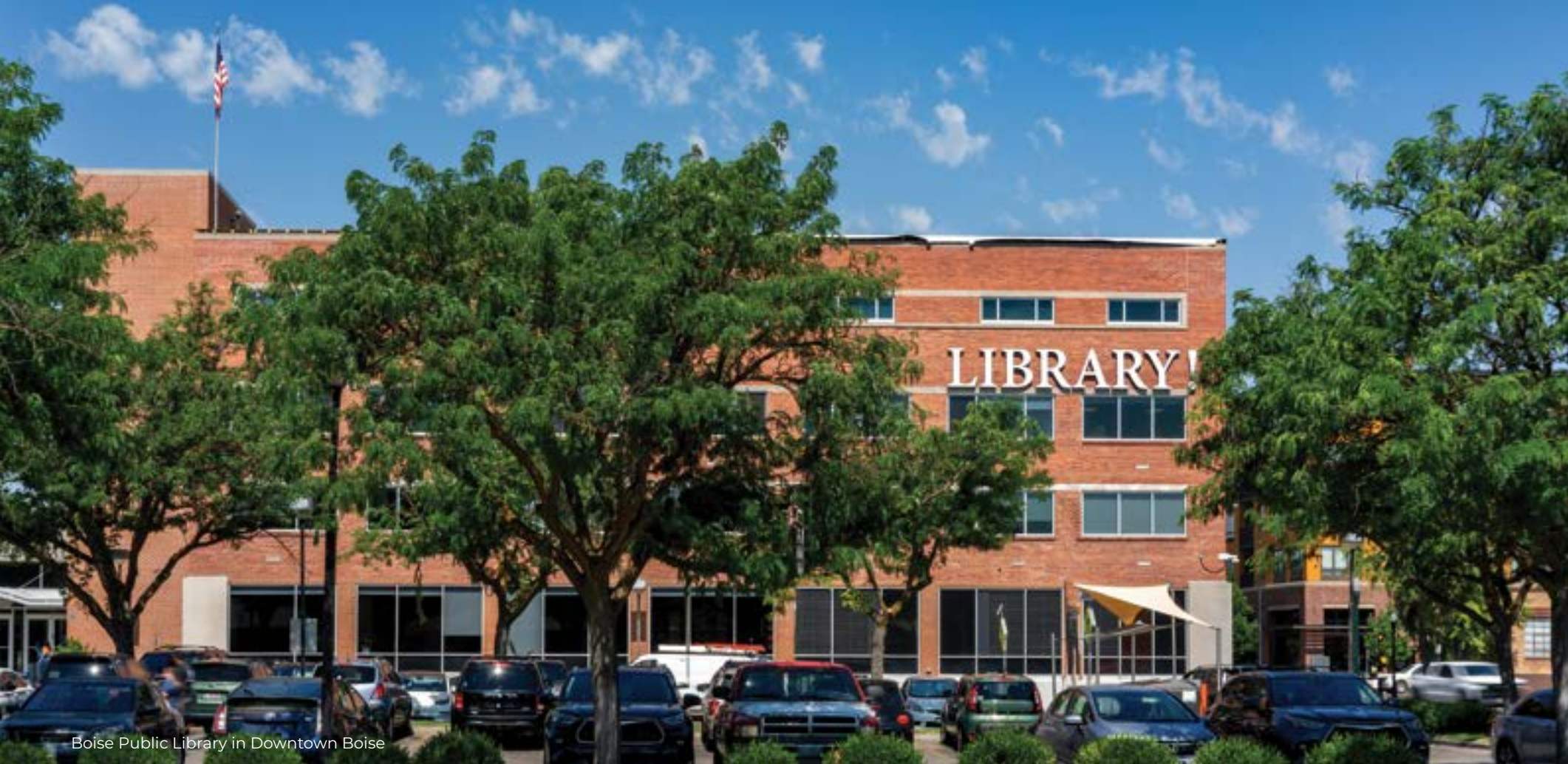
A hidden gem, the Kuna Caves are subterranean lava tubes offering a unique and adventurous exploration experience. It's a must-see for thrill-seekers and geology enthusiasts.

LIZARD BUTTE

Near Middleton, this iconic rock formation is known for its Easter sunrise services and stunning panoramic views of the surrounding countryside.

INDIAN CREEK PLAZA

Caldwell's vibrant plaza offers year-round events, including a winter ice skating ribbon and dazzling light displays, making it a community favorite.



Boise Public Library in Downtown Boise



DISCOVER BOISE'S LIBRARIES

Boise is home to a robust network of libraries that cater to the diverse needs of the community. The **Boise Public Library** system features a central library in downtown Boise and several branch locations throughout the city, including the Library! at Cole & Ustick, Library! at Hillcrest, Library! at Collister, and the Library! at Bown Crossing. Each location offers a welcoming environment with extensive collections of books, movies, music, and digital resources.

Beyond traditional lending services, Boise libraries are hubs of community engagement. They host events such as storytime for children, book clubs, and workshops for all ages. Makerspaces with 3D printers, craft tools, and creative software provide innovative opportunities for exploration and learning. The downtown location also offers a dedicated children's area, research assistance, and unique local history archives.

In addition to the public library system, the **Albertsons Library** at Boise State University serves as a valuable resource for students and community members, featuring specialized research collections and access to academic resources. With such a vibrant library network, Boise provides endless opportunities for education, creativity, and community connection.

LIBRARIES BEYOND BOISE

The Treasure Valley is enriched by several additional libraries that extend opportunities for learning, exploration, and community engagement. Each of these libraries offers its own unique programs and amenities, catering to diverse audiences.

The **Garden City Public Library** is a cozy and innovative space that serves as a hub for creativity and connection. Known for its friendly atmosphere, it offers a wide range of books, digital resources, and family-friendly programming. Visitors can enjoy free Wi-Fi, public computers, and events such as storytime, craft workshops, and book clubs.

The **Meridian Library District** serves the growing Meridian community with a focus on innovation and engagement. The flagship Cherry Lane Library offers extensive collections, study spaces, and programs like STEAM workshops and book clubs. The Pinnacle Library, located in South Meridian, features modern amenities such as makerspaces, meeting rooms, and tech-focused resources. Both branches emphasize family-friendly programming and provide welcoming spaces for learning and creativity.

The **Eagle Public Library** is a vibrant community resource that goes beyond traditional library services. In addition to its diverse collection of books and digital materials, the library offers unique programming like gardening workshops, technology classes, and cultural events. Its welcoming atmosphere and beautiful setting make it a favorite for families and individuals seeking enrichment and connection.

The **Nampa Public Library** is a stunning three-story facility that serves as a dynamic center for learning and activity. With an expansive collection of books, DVDs, and digital resources, it caters to a wide range of interests. Its robust calendar of events includes art exhibits, author talks, and educational workshops. Dedicated children's and teen areas, along with a comfortable café, create an inviting environment for families and visitors of all ages.

The **Caldwell Public Library** plays a vital role in the community by providing access to a wide range of materials and services. With its welcoming environment, the library hosts educational programs, technology assistance, and engaging events for children and adults. Whether you're looking to research, relax, or participate in a workshop, this library offers something for everyone.



DISCOVER PUBLIC SCHOOLS

The Treasure Valley offers an impressive range of educational opportunities that shine within Idaho's education system. With a variety of public and private schools providing quality Pre-K through K-12 education, families have access to learning environments tailored to their needs. Local school districts are dedicated to delivering comprehensive educational experiences for all ages, supported by smaller class sizes, cutting-edge technology integration, and diverse extracurricular and specialized programs. This commitment to academic excellence is bolstered by a strong sense of community, creating a nurturing environment where students can thrive. By emphasizing both foundational skills and real-world readiness, the Treasure Valley ensures that its students are well-equipped for future success. It's this combination of innovation and support that makes the area a standout choice for families who value exceptional and forward-thinking educational opportunities.

LOCAL SCHOOL DISTRICTS

BOISE SCHOOL DISTRICT

33 Elementary Schools
8 Junior High Schools • 5 High Schools
8169 W Victory Rd, Boise, ID 83709
208-854-4000

WEST ADA SCHOOL DISTRICT

35 Elementary Schools • 13 Middle Schools • 13 High Schools
1303 E Central Dr, Meridian, ID 83642
208-855-4500

KUNA SCHOOL DISTRICT

6 Elementary Schools • 3 Middle Schools • 3 High Schools
1450 Boise St, Kuna, ID 83634
208-922-1000

NAMPA SCHOOL DISTRICT

14 Elementary Schools • 6 Middle Schools • 8 High Schools
619 S Canyon St, Nampa, ID 83686
208-465-2700

CALDWELL SCHOOL DISTRICT

5 Elementary Schools • 2 Middle Schools • 2 High Schools
1101 E Caldwell Blvd, Caldwell, ID 83605
208-455-3300

VALLIVUE SCHOOL DISTRICT

7 Elementary Schools • 3 Middle Schools • 3 High Schools
5207 S Montana Ave, Caldwell, ID 83607
208-454-0445

MIDDLETON SCHOOL DISTRICT

3 Elementary Schools • 1 Middle School • 2 High Schools
5 S Viking Ave, Middleton, ID 83644
208-585-3027

EMMETT SCHOOL DISTRICT

5 Elementary Schools • 1 Middle School • 2 High Schools
119 N Wardwell Ave, Emmett, ID 83617
208-365-6301

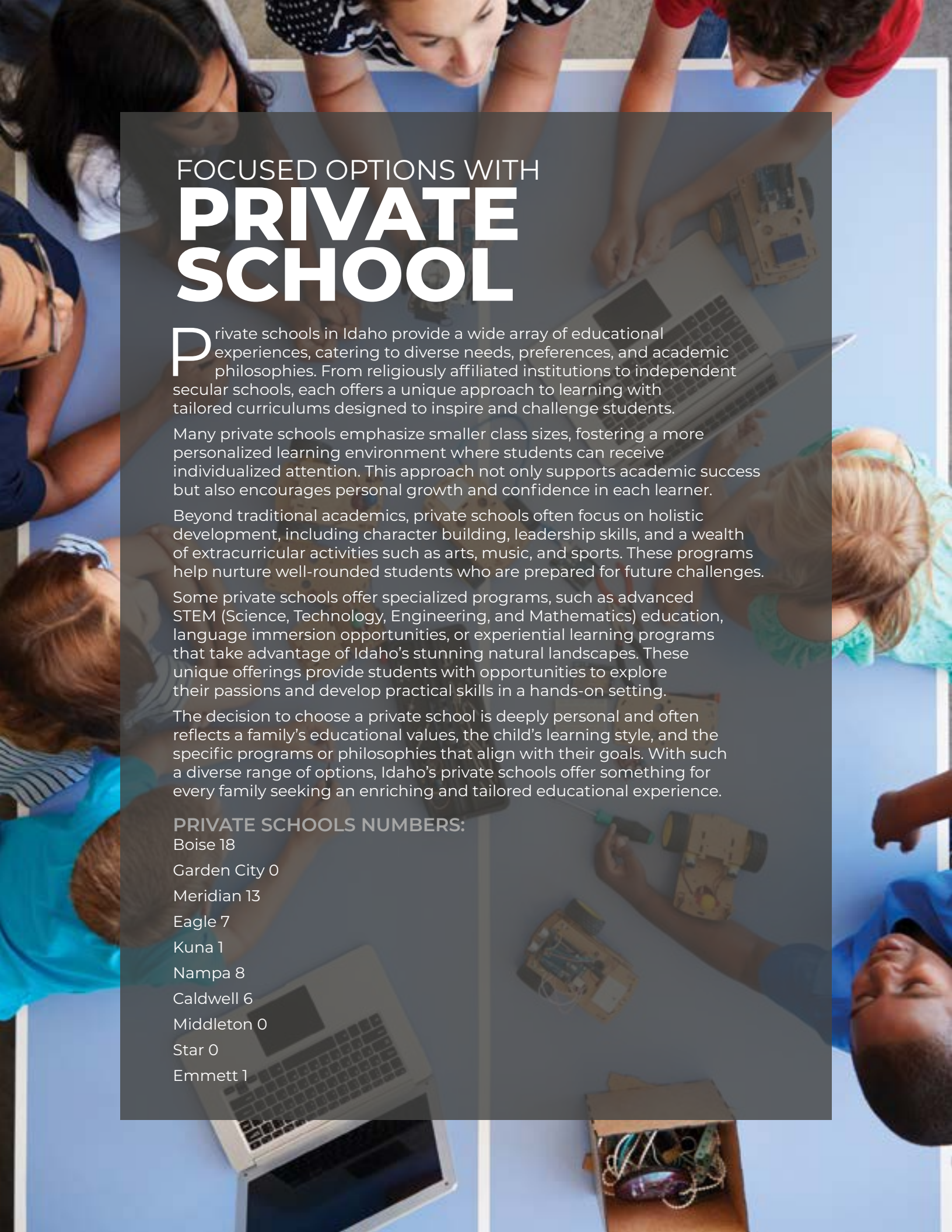
FLEXIBLE EDUCATION WITH HOMESCHOOL

Homeschooling in Idaho is a legally recognized and highly flexible option, with some of the least restrictive laws in the country. Parents are not required to notify the state or local school district of their decision to homeschool, and there are no state-mandated curriculums or subjects. This allows families to tailor education to their child's individual needs, using materials and approaches that align with their learning style. Additionally, parents do not need teaching qualifications, and standardized testing or progress reports are not required, providing a highly personalized and adaptable educational experience.

While Idaho does not mandate record-keeping, families are encouraged to maintain documentation of attendance, curriculum, and student work to ease potential transitions or compliance with other states' regulations. Homeschoolers may access some special education services and, in some districts, participate in extracurricular activities offered by local public schools. Idaho's laws empower families to take full responsibility for their children's education, and parents are advised to plan carefully and connect with local homeschooling networks for guidance and support.

Source: Idaho Department of Education





FOCUSED OPTIONS WITH **PRIVATE SCHOOL**

Private schools in Idaho provide a wide array of educational experiences, catering to diverse needs, preferences, and academic philosophies. From religiously affiliated institutions to independent secular schools, each offers a unique approach to learning with tailored curriculums designed to inspire and challenge students.

Many private schools emphasize smaller class sizes, fostering a more personalized learning environment where students can receive individualized attention. This approach not only supports academic success but also encourages personal growth and confidence in each learner.

Beyond traditional academics, private schools often focus on holistic development, including character building, leadership skills, and a wealth of extracurricular activities such as arts, music, and sports. These programs help nurture well-rounded students who are prepared for future challenges.

Some private schools offer specialized programs, such as advanced STEM (Science, Technology, Engineering, and Mathematics) education, language immersion opportunities, or experiential learning programs that take advantage of Idaho's stunning natural landscapes. These unique offerings provide students with opportunities to explore their passions and develop practical skills in a hands-on setting.

The decision to choose a private school is deeply personal and often reflects a family's educational values, the child's learning style, and the specific programs or philosophies that align with their goals. With such a diverse range of options, Idaho's private schools offer something for every family seeking an enriching and tailored educational experience.

PRIVATE SCHOOLS NUMBERS:

Boise 18

Garden City 0

Meridian 13

Eagle 7

Kuna 1

Nampa 8

Caldwell 6

Middleton 0

Star 0

Emmett 1



Albertsons Stadium at Boise State University

HIGHER EDUCATION AT **COLLEGES AND UNIVERSITIES**

The Treasure Valley boasts a vibrant cluster of colleges and universities, reflecting its commitment to academic excellence and diverse learning opportunities. These institutions foster innovation, strong community ties, and career readiness, while contributing to the area's cultural and economic vitality.

BOISE STATE UNIVERSITY

BSU's picturesque campus along the Boise River spans 192 acres, offering 200 areas of study. Known for its innovative research, state-of-the-art facilities, and lively campus life, BSU attracts students nationwide. Its iconic blue football turf and cultural events add to Boise's dynamic atmosphere. Plan a tour to experience this thriving academic hub.



University of Idaho in Moscow

UNIVERSITY OF IDAHO

U of I's main campus, located in Moscow, 300 miles north of Boise, anchors its academic excellence. The Boise campus specializes in law, engineering, and graduate studies, fostering professional development and industry collaboration within Boise's vibrant community.

IDAHO STATE UNIVERSITY

ISU's main campus, located in Pocatello, anchors its statewide mission. The Meridian campus serves 1,000 students with 30+ health science-focused programs, leveraging high-tech facilities and strong community partnerships to drive educational growth in the Treasure Valley.

NORTHWEST NAZARENE UNIVERSITY

NNU in Nampa combines rigorous academics with Christian values. Known for theology, business, nursing, and education, its small class sizes foster a supportive community. Ideal for students seeking personal and spiritual growth.

THE COLLEGE OF IDAHO

This Caldwell-based liberal arts college is renowned for its PEAK curriculum, allowing students to major in one area and minor in three. Its small class sizes, tight-knit community, and 85% medical school acceptance rate make it a top choice for rigorous academics and career preparation.



IDAHO COLLEGE OF OSTEOPATHIC MEDICINE

ICOM in Meridian, Idaho's first medical school, focuses on primary care and rural medicine. With state-of-the-art facilities, clinical rotations, and a commitment to holistic care, it addresses regional healthcare needs.

BOISE BIBLE COLLEGE

This Garden City institution offers biblically-centered education for ministry and leadership roles. Its intimate campus provides personalized attention, fostering spiritual growth and learning.



Northwest Nazarene University in Nampa

COLLEGE OF WESTERN IDAHO

As Idaho's largest community college, CWI offers transfer degrees and career-technical programs across multiple campuses. Its flexible schedules and affordable tuition make education accessible to all.

EAGLE GATE COLLEGE BOISE

Specializing in accelerated career-focused programs, Eagle Gate equips students with practical skills in healthcare, business, and legal studies. Smaller class sizes ensure personalized attention.

UNIVERSITY OF DUBUQUE LIFE MERIDIAN

Designed for adult learners, this program offers five-week courses in a face-to-face format. With flexible schedules and tailored support, it enables adults to balance academics, work, and family life.

The content of the "2025 Idaho Relocation Guide To The Treasure Valley" has been meticulously compiled and authored by Idaho Relocation Guide LLC. This guide is subject to copyright laws and its replication in any form for use in external publications is strictly prohibited without the explicit written consent of Idaho Relocation Guide LLC. The photographic content within this guide is also protected under copyright, either owned by respective individuals or licensed to Idaho Relocation Guide through shutterstock.com, adobestock.com and istock.com, or is our own original work. While every attempt has been made to ensure the reliability and accuracy of the information presented in this guide, we do not guarantee its complete accuracy.

Art Director: Sophia Lizberg of Lizberg Creative
Cover Photo by Jacque Osborn Photography



POWERHOUSE

REAL ESTATE GROUP

